



Electric Pallet Stackers Capacity 1400 and 1600 kg L14AP, L16AP/L14APi, L16APi SERIES 372

Safety

The Linde Electric Pallet Stacker is equipped with three independent braking systems. A special booster circuit prevents the truck rolling back when starting on a gradient. Automatic speed reduction when cornering ensures stability in operation. The large suspended platform has integral side guards which can be folded down to protect the operator. While operating with the platform raised, the operator's feet are well protected by a rubber strip at the base of the chassis.

Performance

A chassis width of only 800 mm allows the truck to work easily in narrow aisles. Advanced chassis design and mast construction results in market leading residual capacity. Linde OptiLift® control provides true proportional lifting and lowering. A rated capacity of 1,600 kg and a 1.5 kW drive motor giving a top speed of 9 km/h ensure superior performance.

Comfort

Electric power steering and the ergonomic Linde tiller make the truck very easy to use. All controls can be operated with either hand without having to let go of the tiller. Road shocks from uneven ground are cushioned by the soft rubber mat on the platform. Standing well back from the mast, the operator has excellent visibility of the load right up to maximum lift height.

Reliability

These rugged trucks incorporate tried and tested technology and components to ensure consistent reliability. They have already proved their ability to deliver faster, safer load handling over an extended working life in the toughest industrial environments.

Service

Linde Pallet Stackers are designed to reduce maintenance costs and deliver the highest levels of productivity over many years. Fast, easy access to all components, electronics sealed in aluminium housings isolating them from road shocks, dust and humidity all play a part in guaranteeing high availability.

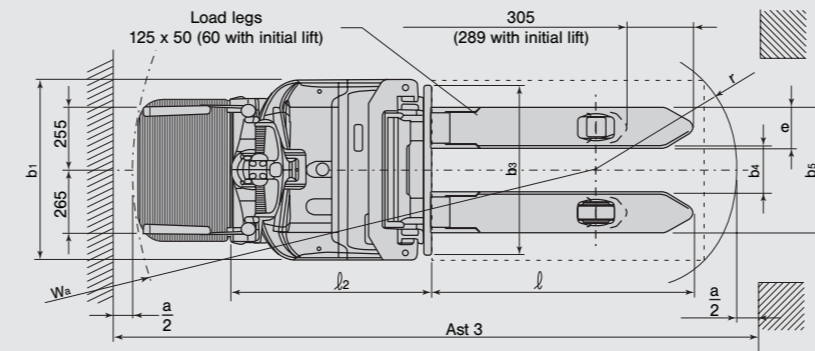
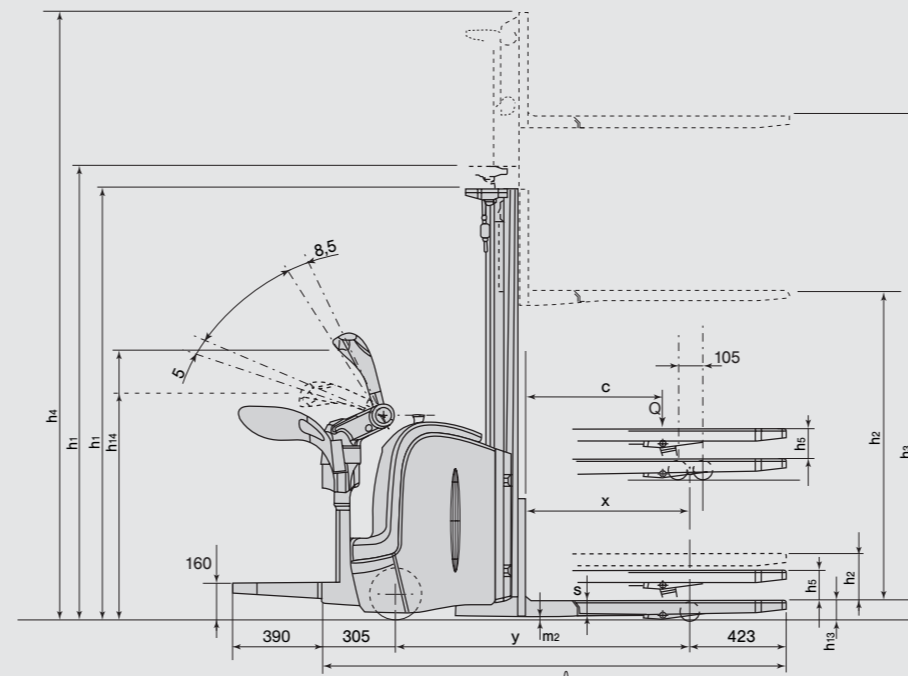
Linde Material Handling

Linde

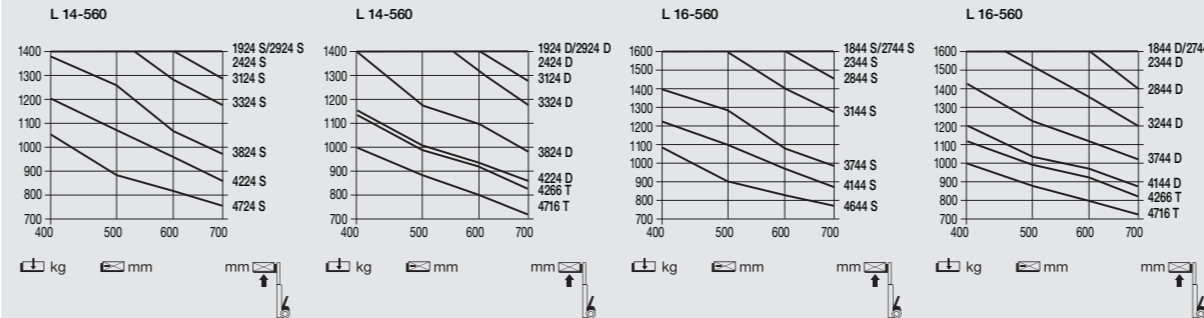
Technical data (according to VDI 2198)

Characteristics	1.1	Manufacturer					
	1.2	Model designation					
	1.3	Power unit: Battery, diesel, gasoline, LP gas, AC					
	1.4	Operation: manual, pedestrian, rider seat, rider stand, order picker					
Weights	1.5	Q (kg)	1400	1600	1400 (2000) ¹⁾	1600 (2000) ¹⁾	
	1.6	c (mm)	600	600	600	600	
	1.8	x (mm)	726	726	648/726 ²⁾	648/726 ²⁾	
Wheels and tyres	1.9	y (mm)	1303	1303	1225/1203	1225/1203	
	2.1	Service weight	kg	1240	1240	1230	1230
	2.2	Axle load with load, operator/load side	kg	-	-	-	-
	2.3	Axle load without load, operator/load side	kg	-	-	-	-
Measurements	3.1	Tyres: operator/load side: Rubber (R), polyurethane (PU)					
	3.2	mm	ø 230 x 90	ø 230 x 90	ø 230 x 90	ø 230 x 90	
	3.3	mm	ø 85 x 85	ø 85 x 85	ø 85 x 85	ø 85 x 85	
	3.4	mm	2x ø 140 x 50	2x ø 140 x 50	2x ø 140 x 50	2x ø 140 x 50	
	3.5	Wheels, number operator/load side (x=driven)					
	3.6	mm	520	520	520	520	
	3.7	mm	380	380	380	380	
	4.2	h1 (mm)	1990	1990	1990	1990	
	4.3	h2 (mm)	150	150	150	150	
	4.4	h3 (mm)	2924	2844	2924	2844	
	4.5	h4 (mm)	3460	3380	3460	3380	
	4.6	h5 (mm)	-	-	125	125	
	4.9	h14 (mm)	1095/1217	1095/1217	1095/1217	1095/1217	
	4.15	h13 (mm)	86	86	86	86	
4.19	l1 (mm)	2030/2420	2030/2420	2030/2420	2030/2420		
4.20	l2 (mm)	880/1270	880/1270	880/1270	880/1270		
4.21	b1/b2 (mm)	800	800	800	800		
4.22	s/e/l (mm)	71/180/1150	71/180/1150	71/180/1150	71/180/1150		
4.24	b3 (mm)	780	780	780	780		
4.25	b5 (mm)	560	560	560	560		
4.32	m2 (mm)	30	30	145/20	145/20		
4.33	Ast (mm)	-	-	-	-		
4.34	Ast (mm)	2455/2830	2455/2830	2455/2830	2455/2830		
4.35	Wa (mm)	1640/2010	1640/2010	1560/1930	1560/1930		
Performance	5.1	km/h	7.0/9.0	6.5/9.0	7.0/9.0	6.5/9.0	
	5.2	m/s	0.16/0.25 (0.40) ³⁾	0.14/0.22 (0.37) ³⁾	0.16/0.25 (0.40) ³⁾	0.14/0.22 (0.37) ³⁾	
	5.3	m/s	0.45/0.45	0.40/0.35	0.45/0.45	0.40/0.35	
	5.7	m/s	-	-	-	-	
	5.8	%	9.0-10	8.0-10	9.0-10	8.0-10	
	5.10	Service brake					
Drive	6.1	kW	1.5	1.5	1.5	1.5	
	6.2	kW	3.0	3.0	3.0/0.8	3.0/0.8	
	6.3	Battery (IEC)					
	6.4	V/Ah	24/220	24/220	24/220	24/220	
	6.5	kg	200	200	200	200	
	6.6	Ah	76,9	76,9	76,9	76,9	
Other	8.1	LDC with microprocessor					
	8.4	dB (A)	<65	<65	<65	<65	

Figures for standard version may vary when optional equipment is fitted.
 1) Capacity for load leg initial lift.
 2) Initial lift up/down.
 3) Figures in parentheses for optional ultra fast lifting.



Turning radius $A_{st} = W_a + r + a$
 (Safety clearance $a = 200$ mm)



Mast (in mm)	L14	1924S	2424S	2924S	3324S	3824S	4224S	4724S	1924D	2424D	2924D	3324D	3824D	4224D	4724D
Lift	h3	1924	2424	2924	3324	3824	4224	4724	1924	2424	2924	3324	3824	4224	4724
Lift and fork height	h3+h13	2010	2510	3010	3410	3910	4310	4810	2010	2510	3010	3410	3910	4310	4810
Height lowered	h1	1490	1740	1990	2190	2440	2540	2890	1415	1665	1915	2115	2365	2565	2065
Height extended	h4	2460	2960	3460	3860	4360	4760	5260	2460	2960	3460	3860	4360	4760	5260
Free lift	h2	150	150	150	150	150	150	150	862	1212	1462	1662	1912	2112	1379

Mast (in mm)	L16	1844S	2344S	2844S	3244S	3744S	4144S	4644S	1844D	2344D	2844D	3244D	3744D	4144D	4266T	4716T
Lift	h3	1844	2344	2844	3244	3744	4144	4644	1844	2344	2844	3244	3744	4144	4266	4716
Lift and fork height	h3+h13	1930	2430	2930	3330	3830	4230	4730	1930	2430	2930	3330	3830	4230	4352	4802
Height lowered	h1	1490	1740	1990	2190	2440	2640	2890	1415	1665	1915	2115	2365	2565	1915	2065
Height extended	h4	2380	2880	3380	3780	4280	4680	5180	2380	2880	3380	3780	4280	4680	4760	5252
Free lift	h2	150	150	150	150	150	150	150	879	1129	1379	1579	1829	2029	1379	1529

Other masts on request



Equipment

Standard equipment

Folding stand-on platform with side guards

Linde OptiLift®: fully proportion
al lifting control on the tiller head

Initial lift with equalizing linkage
(level compensator) on L14i, L16i – AP

Soft lowering of fork carriage

Electric power steering

Linde Digital Control (LDC)
with programmable operating parameters

Automatic speed reduction when cornering

Automatic braking with Linde Brake Control (LBC)

Foot protection when the platform raised

Polycarbonate/mesh mast protection

Cushion rubber drive wheel

Single polyurethane load wheels with string guard

Twin polyurethane castor wheels

Vertical battery change (2 & 3 PzS)

Battery charger cable and plug

Protection to -10°C

Optional equipment

Drive wheels: polyurethane,
wet grip or treaded cushion rubber

Load wheels: tandem polyurethane,
tandem polyurethane greasable

Load backrest (h=1000 mm)

Alternative fork dimensions

Different masts types and lift heights :
standard, duplex, triplex

Ultra fast lifting for loads up to 300 kg

Side battery change (2 & 3 PzS)

Battery changing stand or trolley for side battery change

Built-in charger (vertical battery change,
max. 240 Ah capacity)

Cold store version to -35°C

Other options available on request

Features

Chassis & Mast

- Rounded contours, no sharp edges
- Heavy gauge steel chassis results in superior rigidity and durability
- Foot protection when the platform is folded up
- Suspended rider platform
- Integral side guards, fold up and down in one easy motion
- Rigid clearview mast optimizes visibility
- Wide choice of masts



OptiLift® control

- OptiLift® fully proportional lift control provides smooth, precise, quiet mast operation
- Control slide mounted centrally on tiller head
- High performance, energy efficient lift unit
- Soft lowering of forks protects loads

Initial Lift Versions: L14i AP, L16i AP

- Initial lift of load arms increases ground clearance to cope with ramps or dock levellers and bridging plates
- The equalising linkage provides enhanced stability when turning across uneven surfaces
- A 2000 kg load can be lifted using the initial lift function

Power steering

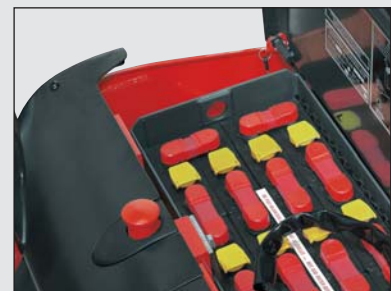
- Effortless, electric power steering ensures superior driving comfort
- Precise and easy manoeuvring thanks to the tiller designed to suit both pedestrian and ride-on operation
- Automatic speed reduction when cornering guarantees stability

Brakes

Automatic braking

- On releasing the traction butterfly
- By selecting the opposite direction of travel
- By moving tiller to the fully up or down position

Emergency brake: emergency isolator interrupts all power to the truck and actuates the electro-mechanical brake



Tiller

- The operator's hands are well protected by the sturdy aluminium guard
- Central tiller position provides maximum manoeuvrability
- All traction and lift functions are integrated into the tiller and can be operated with either hand

Motor

- Powerful, smooth-running 1.5 kW DC traction motor
- Adjustable LDC drive controller - all operating parameters can be customized to suit the application
- No rollback when starting on a gradient
- Max traction speed of 9 km/h

Batteries & chargers

- 24V batteries from 250 Ah (2PzS) to 375 Ah (3PzS)
- Vertical battery change as standard (2 & 3 PzS), side change as option
- Wide range of battery chargers: standard wall-mounted type or high frequency chargers
- Optional built-in charger for batteries with max. 240 Ah capacity

Subject to modification in the interests of engineering progress. Illustrations and technical details non-binding for actual construction. All measurements subject to customary tolerances.

