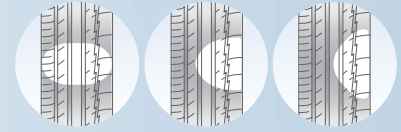


Tuned For Sport Compacts

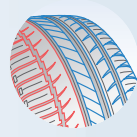
Michelin® Pilot® Exalto® PE2™ tires promote **outstanding street performance in wet and dry conditions.**

Predictable Dry Grip*

A Variable Contact Patch breaks traditional compromises by putting more rubber on the road during a variety of maneuvers, resulting in exceptional grip and consistent straight-line performance.



Variable Contact Patch



Dual Tread Compound

Precise Control In Wet Conditions Without Sacrificing Dry Traction†

A dual, asymmetric tread design combines two tread patterns to deliver optimum wet and dry grip, helping the tire maintain its performance levels.

Performance With Low Tread Noise

A uniquely designed, acoustically tuned tread greatly reduces road noise and vehicle vibrations, leading to a high level of on-road comfort.

*According to independent third-party testing.
†Based on 2006 TPM data set.



Popular Replacement Market Fitment:

Honda Civic Si



Size	Service Description	Sidewall	MSPN	Rim Width Range (inches)	Section Width on Measuring Rim Width	Overall Diameter	Tread Depth (in/32nds)	Revs/Mile at 45 mph	Max. Load Single (lbs/psi)	Treadwear	Traction	Temperature	Original Equipment
195/45R15	78V	BSW	61882	6.0 - 7.5	7.7 on 6.5	21.9	10.0	950	937@44	240	A	A	
195/55R15	85V	BSW	92260	5.5 - 7.0	7.9 on 6.0	23.4	10.0	889	1135@44	240	A	A	
205/50R15	86V	BSW	99435	5.5 - 7.5	8.4 on 6.5	23.1	10.0	900	1168@44	240	A	A	
205/50ZR15	86W	BSW	50979	5.5 - 7.5	8.4 on 6.5	23.1	10.0	900	1168@51	240	A	A	
205/55ZR15	88W	BSW	78038	5.5 - 7.5	8.4 on 6.5	23.9	10.0	870	1235@51	240	A	A	
225/50ZR15	91W	BSW	90091	6.0 - 8.0	9.2 on 7.0	23.9	10.0	870	1367@51	240	A	A	
195/45R16/XL	84V	BSW	92463	6.0 - 7.5	7.7 on 6.5	22.9	10.0	908	992@50	240	A	A	
195/50R16	84V	BSW	92658	5.5 - 7.0	7.9 on 6.0	23.7	10.0	878	1113@44	240	A	A	
205/45ZR16	83W	BSW	95178	6.5 - 7.5	8.1 on 7.0	23.2	10.0	897	1073@51	240	A	A	
205/50ZR16	87W	BSW	69612	5.5 - 7.5	6.4 on 8.5	24.1	10.0	863	1201@51	240	A	A	
205/55ZR16	91W	BSW	45960	5.5 - 7.5	8.4 on 6.5	24.9	10.0	835	1356@51	240	A	A	
215/40ZR16/XL	86W	BSW	48891	7.0 - 8.5	8.6 on 7.5	22.8	10.0	912	1168@50	240	A	A	
225/50ZR16	92W	BSW	53997	6.0 - 8.0	9.2 on 7.0	24.9	10.0	835	1389@51	240	A	A	
225/55ZR16	95W	BSW	29031	6.0 - 8.0	9.2 on 7.0	25.7	10.0	809	1521@51	240	A	A	
205/40ZR17/XL	84W	BSW	47184	7.0 - 8.0	8.3 on 7.5	23.5	10.0	885	1102@50	240	A	A	
205/45ZR17/XL	88W	BSW	71766	6.5 - 7.5	8.1 on 7.0	24.3	10.0	856	1235@50	240	A	A	
205/50ZR17	89W	BSW	28716	5.5 - 7.5	6.4 on 8.5	25.1	10.0	829	1433@51	240	A	A	
215/40ZR17/XL	87W	BSW	83489	7.0 - 8.5	8.6 on 7.5	23.8	10.0	875	1201@50	240	A	A	
215/45ZR17/XL	91W	BSW	55069	7.0 - 8.0	8.4 on 7.0	24.6	10.0	846	1201@50	240	A	A	HO
215/55ZR17	94W	BSW	05691	6.0 - 7.5	8.9 on 7.0	26.3	10.0	791	1477@51	240	A	A	
225/45ZR17/XL	94W	BSW	87473	7.0 - 8.5	8.9 on 7.5	25.0	10.0	832	1477@50	240	A	A	
245/40ZR17	91W	BSW	15203	8.0 - 9.5	9.8 on 8.5	24.7	10.0	842	1356@51	240	A	A	
245/45ZR17	95W	BSW	39365	7.5 - 9.0	9.6 on 8.0	25.7	10.0	809	1521@51	240	A	A	
225/40ZR18/XL	92Y	BSW	37955	7.5 - 9.0	9.0 on 8.0	25.0	10.0	832	1389@50	240	A	A	

Original Equipment Key: HO = Honda

XL = Extra Load

- The dimensions shown are average tire design values for tires measured on specified measuring rim widths. Some tires may vary from this value by +/- 3% of the section height (affecting overall diameter) and +/- 4% of the section width.
- Section width varies approximately 0.2" (5mm) for every 0.5" change in rim width.

WARNING: Serious or fatal injury may result from tire failure due to underinflation or overloading. To ensure correct air pressure and vehicle load, refer to vehicle owner's manual or tire information placard on the vehicle. Serious injury or death may result from explosion of tire/rim assembly due to improper mounting. Only tire professionals should mount tires, and they should never inflate beyond 40 psi to seat the beads. Before mixing types of tires in any configuration on any vehicle, be sure to check the vehicle owner's manual for its recommendations.

DANGER: Never mount a 16" diameter tire on a 16.5" rim.
DANGER: Never mount a 17" diameter tire on a 17.5" rim.

Inflation pressure increase must not exceed the maximum pressure branded on the tire sidewall. When a customer requests a replacement tire with a lower speed rating than the original equipment tire, you must clearly communicate to him or her that the handling of the vehicle may be different and that its maximum speed capability is limited to that of the lowest speed-rated tire on the vehicle. Exceeding the lawful speed limit is neither recommended nor endorsed.

For high-speed driving, additional inflation pressure and possibly reduced tire loading and/or upsizing is required. In the absence of specific recommendations by the vehicle manufacturer, use the following guidelines based on those in the European Tyre and Rim Technical Organization Standards Manual.

For speeds over 160km/h (100 mph), load and inflation must be adjusted according to the table below.

V-Speed Rated Sizes:

Maximum Speed (mph)	100	106	112	118	124	130	136	143	149
Inflation Increase (psi)	0	1	2	3	4	5	5	5	5
Load Capacity (% of max)	100	100	100	100	100	100	97	94	91

W-Speed Rated Sizes:

Maximum Speed (mph)	118	124	130	136	143	149	155	161	168
Inflation Increase (psi)	0	1.5	3.0	4.5	6.0	7.5	7.5	7.5	7.5
Load Capacity (% of max)	100	100	100	100	100	100	95	90	85

Y-Speed Rated Sizes:

Maximum Speed (mph)	118	124	130	136	143	149	155	161	168	174	180	186
Inflation Increase (psi)	0	0	0	1.5	3	4.5	6	7.5	7.5	7.5	7.5	7.5
Load Capacity (% of max)	100	100	100	100	100	100	100	100	100	95	90	85

