



Aeolus Consumer Tyre
www.aeolustyre.com



2014 AEOLUS CONSUMER TYRE CATALOG

AEOLUS TYRE CO.,LTD.

TEL:0086-0391-3999113 FAX:086-0391-3999366

WEB:<http://www.aeolustireamerica.com> (America) <http://www.aeolus-europe.com> (EU)

EMAIL:service@aeolustyre.biz

SIMPLY GOOD TYRES

WELCOME TO AEOLUS

AEOLUS TYRE CO., LTD. manufactures top class tyres for passenger cars, SUVs and vans.

AEOLUS tyres are known worldwide and are trusted by millions of users. Quality control is AEOLUS' highest priority. All manufacturing facilities operate according to strict quality guidelines and are certified to the quality management standards ISO 9001 and ISO/TS16949.

All tyres, which AEOLUS delivers throughout the EU, correspond to the provisions and guidelines of the EU. These include even the most demanding requirements of the Dutch road authority RDW for the testing of motor vehicles and components.

AEOLUS invests heavily in tyre technology and we have an advanced technology center and four research and development institutes for elastomers and tyres. This investment makes it possible to offer millions of customers around the world tyres with groundbreaking technology.

AEOLUS and the Environment:

AEOLUS TYER CO., Ltd. is committed with full force to the preservation of the environment and thus for a green and sustainable future.

Raw materials:

All raw materials comply with the REACH Regulation EC 1907/2006.

Production:

The modern manufacturing processes and plants are characterized by low energy consumption and generate less air emissions and noise.

Products:

AEOLUS tyres meet the highest standards and achieve the best results in national tests and inspections. Therefore AEOLUS tyres offer safety and reduced CO2 emissions and noise.

TRIED AND TESTED QUALITY

AEOLUS Tyre is one of the 20 leading tyre manufacturers in the world. The company has gained an excellent reputation as a supplier of commercial vehicle and OTR tyres internationally. In these sectors, a high value is placed on quality, reliability and durability.

The passenger car tyres of the ACE series tyres from AEOLUS are developed and manufactured according to the same philosophy and to the same high quality standards.

THE ACE SERIES

The tyres of the GreenAce, PrecisionAce, SteeringAce and TouringAce series come in the most popular sizes on the market. The range is being expanded gradually. In this way, AEOLUS can ensure high quality. Among the additions to this outstanding tyre range includes for example the SnowAce (winter tyres), the TransAce (for transporters and vans) and the CrossAce (for SUVs).

This clear subdivision creates the perfect opportunity for offering customers with TransAce expectations the most suitable product. AEOLUS passenger car tyres contribute therefore to increasing margins and customer satisfaction.

THE ADVANTAGES OF THE ACE SERIES

Optimum grip on wet surfaces

Long service life

Good driving behaviour

Modern tread design

Low rolling resistance



FOLLOW US TO MAXIMUM PERFORMANCE

- Summer tyre
 - UHP
 - UHP
 - HP
 - General Use
- All Season
 - SteeringAce AU01
 - SteeringAce AU04
 - PrecisionAce AH01
 - GreenAce AG02
 - GreenAce AG01
- Touring tyre
 - UHP
 - HP
- Winter Tyre
 - SteeringAce AU02
 - PrecisionAce AH02
 - 4SeasonAce AA01
 - TouringAce AG03
 - Central Europe HP
 - Central Europe General Use
 - Nordic Friction
 - Nordic Studdable
- SnowAce
 - SnowAce AW03
 - SnowAce AW02
 - SnowAce AW01
 - Ice Challenger AW05

AEOLUS TYRE PCR

AEOLUS SUMMER TYRE

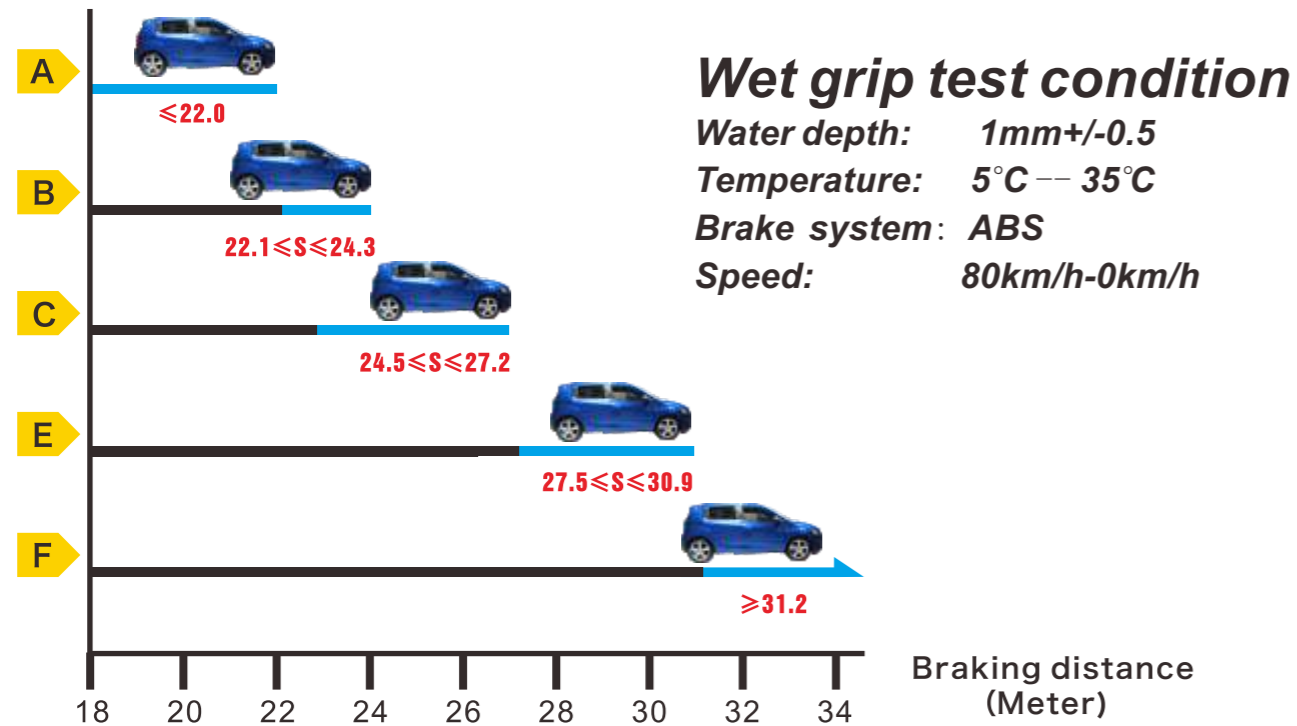
1.GOOD WET GRIP

Wet road is slippery and dangerous, good wet grip tyres offer superior grip on wet road.

Most AEOLUS PCR summer tyres have B level Wet grip.



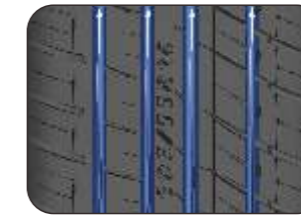
SHORT BRAKING DISTANCE MAKES BIG DIFFERENCE TO YOUR SAFTY!



2.ADVANCED PATTERN DESIGN



Asymmetrical Tread Design



Water Zone



High Density Zig-Zag Siping



Continuous, Solid Central Rib

3.COMFORT PLY AND HIGH DURABILITY CARCASS

Technologically Advanced Silica Compound



4.JOINTLESS BEAD WIRE INCREASES OVERALL TYRE UNIFORMITY

Jointless Bead Wire



THE ULTRA HIGH PERFORMANCE TYRE

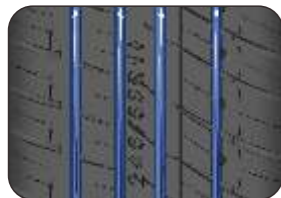
For the sporty driving style: The tyre offers the perfect combination of maximum grip, optimum steering response and harmonious contact with the road. The SteeringAce is sporty and dynamic. It has four circumferential grooves for improved water evacuation under the tread area to prevent hydroplaning. It is especially suitable for the sporty driving style due to the robust tread pattern in the shoulder area.



The SteeringAce AU01 was engineered with a technologically advanced full silica compound to improve handling, braking and tread wear performance.



Asymmetrical Tread Design insures lower noise and provides superior high-speed cornering stability and increased dry and wet traction. The SteeringAce will deliver improved tread wear and longer mileage over competitive directional tread patterns because it can be rotated on the same side.



Four circumferential grooves design provides excellent water evacuation to avoid hydroplaning.



Jointless Bead Wire increases overall tyre uniformity for improved ride quality, while the Rim Protector provides extra protection for the tyre sidewall from curb scrapes.



SteeringAce AU01

Ultra High Performance Summer Tread
SPORTY, ASYMMETRICAL,
WET HANDLING, LOW NOISE



SteeringAce AU01

Ultra High Performance
SPORTY, ASYMMETRICAL,
WET HANDLING, LOW NOISE

SteeringAce AU01



SIZE	/XL	LI&SS	Pattern	RIM		M+S	UTQG			S/W Letter			EU Label Values				
				Standard	Approved		TREAD WEAR	TRACTION	TEMPERATURE	MAX. LOAD (kg)	MAX. LOAD (LBS)	MAX. PRESSURE		Noise Value (dB)	Noise Grade	RR	WET
												(kPa)	PSI				
205/50R16		87W	AU01	6.5J	6.00J-7.00J	-	280	AA	A	545	1201	300	44	71	2	E	B
205/50R16		87V	AU01	6.5J	6.00J-7.00J	-	280	AA	A	545	1201	300	44	71	2	E	B
205/50R16	XL	91W	AU01	6.5J	6.00J-7.00J	-	280	AA	A	545	1201	340	50	72	2	C	B
205/55R16		91W	AU01	6.5J	6.00J-7.00J	-	280	AA	A	615	1356	300	44	71	2	E	B
205/55R16		91V	AU01	6.5J	6.00J-7.00J	-	280	AA	A	615	1356	300	44	71	2	C	B
205/55R16	XL	94W	AU01	6.5J	6.00J-7.00J	-	280	AA	A	615	1356	340	50	72	2	C	B
215/55R16		93W	AU01	7J	6.50J-7.50J	-	280	AA	A	615	1356	300	44	71	2	E	B
215/55R16		93V	AU01	7J	6.50J-7.50J	-	280	AA	A	650	1433	300	44	71	2	C	B
215/55R16	XL	97W	AU01	7J	6.50J-7.50J	-	280	AA	A	730	1609	340	50	72	2	C	B
215/60R16		95V	AU01	6.5J	6.00J-7.00J	-	280	AA	A	690	1521	300	44	71	2	C	B
215/60R16		95V	AU01	6.5J	6.00J-7.00J	M+S	280	AA	A	690	1521	300	44	-	-	C	B
215/60R16	XL	99H	AU01	7J	6.50J-7.50J	-	280	AA	A	775	1709	340	50	72	2	C	B
225/55R16		95V	AU01	7J	6.50J-7.50J	-	280	AA	A	690	1521	300	44	71	2	C	B
225/55R16	XL	99W	AU01	7J	6.50J-7.50J	-	280	AA	A	775	1709	340	50	72	2	C	B
225/60R16		98V	AU01	6.5J	6.00J-7.00J	-	280	AA	A	750	1653	300	44	71	2	C	B
235/60R16		100W	AU01	7J	6.50J-7.50J	-	280	AA	A	800	1764	300	44	73	3	C	B
235/60R16		100H	AU01	7J	6.50J-7.50J	M+S	280	AA	A	800	1764	300	44	-	-	-	-
235/60R16		100V	AU01	7J	6.50J-7.50J	-	280	AA	A	800	1764	300	44	73	3	C	B
205/40ZR17	XL	84W	AU01	7.5J	7.00J-8.00J	-	280	AA	A	500	1102	340	50	72	2	E	B
205/45R17		84W	AU01	7J	6.50J-7.50J	-	280	AA	A	500	1102	300	44	71	2	E	B
205/45R17	XL	88W	AU01	7J	6.50J-7.50J	-	280	AA	A	500	1102	340	50	72	2	E	B
205/50ZR17	XL	93W	AU01	6.5J	6.00J-7.00J	-	280	AA	A	650	1433	340	50	72	2	C	B
215/45R17		87W	AU01	7J	6.50J-7.50J	-	280	AA	A	545	1201	300	44	71	2	E	B
215/45R17	XL	91W	AU01	7J	6.50J-7.50J	-	280	AA	A	545	1201	340	50	72	2	C	B
215/50R17	XL	95W	AU01	7J	6.50J-7.50J	-	280	AA	A	690	1521	340	50	72	2	C	B
215/50R17		95V	AU01	7J	6.50J-7.50J	M+S	280	AA	A	690	1521	340	50	-	-	-	-
225/45ZR17		91W	AU01	7.5J	7.00J-8.00J	-	280	AA	A	615	1356	300	44	71	2	C	B
225/45ZR17	XL	94W	AU01	7.5J	7.00J-8.00J	-	280	AA	A	670	1477	340	50	72	2	C	B
225/50ZR17	XL	98W	AU01	7J	6.50J-7.50J	-	280	AA	A	750	1653	340	50	72	2	C	B
225/55ZR17	XL	101W	AU01	7J	6.50J-7.50J	-	280	AA	A	825	1819	340	50	72	2	C	B
235/45ZR17		94W	AU01	8J	7.50J-8.50J	-	280	AA	A	670	1477	300	44	73	3	C	B
235/45ZR17	XL	97W	AU01	8J	7.50J-8.50J	-	280	AA	A	730	1609	340	50	74	3	C	B
235/50ZR17		96W	AU01	7.5J	7.00J-8.00J	-	280	AA	A	710	1565	300	44	73	3	C	B
235/55R17	XL	103V	AU01	7.5J	7.00J-8.00J	M+S	280	AA	A	875	1929	340	50	0	0		
235/55R17	XL	103W	AU01	7.5J	7.00J-8.00J	-	280	AA	A	875	1929	340	50	74	3	C	B
245/40ZR17	XL	95W	AU01	8.5J	8.00J-9.00J	-	280	AA	A	690	1521	340	50	74	3	C	B
245/45ZR17		95W	AU01	8J	7.50J-8.50J	-	280	AA	A	690	1521	300	44	73	3	C	B
245/45ZR17	XL	99W	AU01	8J	7.50J-8.50J	-	280	AA	A	775	1709	340	50	74	3	C	B
225/40ZR18		88W	AU01	8J	7.50J-8.50J	-	280	AA	A	560	1235	300	44	71	2	E	B
225/40ZR18	XL	92Y	AU01	8J	7.50J-8.50J	-	280	AA	A	630	1389	340	50	72	2	C	B
225/40ZR18	XL	92W	AU01	8J	7.50J-8.50J	-	280	AA	A	630	1389	340	50	72	2	C	B
225/45ZR18	XL	95W	AU01	7.5J	7.00J-8.00J	-	280	AA	A	690	1521	340	50	72	2	C	B
225/45ZR18	XL	95Y	AU01	7.5J	7.00J-8.00J	-	280	AA	A	690	1521	340	50	72	2	C	B
235/40ZR18		91W	AU01	8.5J	8.00J-9.00J	-	280	AA	A	615	1356	300	44	73	3	C	B
235/40ZR18	XL	95W	AU01	8.5J	8.00J-9.00J	-	280	AA	A	690	1521	340	50	74	3	C	B
235/60ZR18	XL	107W	AU01	7J	6.50J-7.50J	-	280	AA	A	975	2149	340	50	74	3	C	B
235/60ZR18	XL	107Y	AU01	7J	6.50J-7.50J	-	280	AA	A	975	2149	340	50	74	3	C	B
245/40ZR18	XL	97W	AU01	8.5J	8.00J-9.00J	-	280	AA	A	730	1609	340	50	74	3	C	B
245/40ZR18	XL	97Y	AU01	8.5J	8.00J-9.00J	-	280	AA	A	730	1609	340	50	74	3	C	B
245/45ZR18	XL	100W	AU01	8J	7.50J-8.50J	-	280	AA	A	800	1764	340	50	74	3	C	B
245/45ZR18	XL	100Y	AU01	8J	7.50J-8.50J	-	280	AA	A	800	1764	340	50	74	3	C	B
235/35ZR19		91W	AU01	8.5J	8.00J-9.00J	-	280	AA	A	615	1356	340	50	74	3	C	B
245/35ZR19		89W	AU01	8.5J	8.00J-9.00J	-	280	AA	A	580	1279	300	44	73	3	E	B
245/35ZR19	XL	93W	AU01	8.5J	8.00J-9.00J	-	280	AA	A	650	1433	340	50	74	3	C	B
225/35ZR20	XL	90W	AU01	8J	7.50J-8.50J	-	280	AA	A	600	1323	340	50	72	2	E	B
245/35ZR20	XL	95Y	AU01	8.5J	8.00J-9.00J	-	280	AA	A	690	1521	340	50	74	3	C	B
245/35ZR20		91Y	AU01	8.5J	8.00J-9.00J	-	280	AA	A	615	1356	300	44	73	3	C	B
255/35ZR20	XL	97W	AU01	9J	8.50J-9.50J	-	280	AA	A	730	1609	340	50	74	3	C	B
275/45ZR20	XL	110W	AU01	9J	8.50J-9.50J	-	280	AA	A	1060	2337	340	50	75	3	C	B

THE ULTRA HIGH PERFORMANCE TYRE

The SteeringAce AU04 is an Extreme Performance Summer tyre developed for serious sports car, sports coupe and performance sedan enthusiasts looking for dry and wet traction on the street. The best 'stability of steering' and 'brake performance' that you can find. Realize the dream of driving with exceptional steering stability and braking performance.



The SeeringAce AU04 was engineered with a technologically advanced silica compound to improve handling, braking and tread wear performance.



SteeringAce AU04
ULTRA HIGH PERFORMANCE SUMMER TREAD
SPORTY, COMFORT, DIRECTIONAL, WET HANDLING

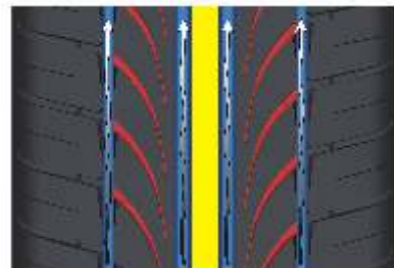


SteeringAce AU04

ULTRA HIGH PERFORMANCE SUMMER TREAD
SPORTY, COMFORT, DIRECTIONAL, WET HANDLING



Large shoulder block design provides long mileage and improve steering stability.



Four longitudinal grooves with two linked with V shape shoulder block provides excellent water evacuation to avoid hydroplaning.



Continuous, solid central rib transfers lateral forces to help provide excellent stability at highway speed.

SIZE	/XL	LI&SS	Pattern	RIM		M+S	S/W Letter		
				Standard	Approved		MAX. LOAD (kg)	MAX. LOAD (LBS)	MAX. PRESSURE (kPa) PSI
195/45R15		78V	AU04	6.5J	6.00J-7.00J	M+S	425	937	300 44
195/50R15		82V	AU04	6J	5.50J-6.50J	M+S	475	1047	300 44
205/50R15		86V	AU04	6.5J	6.00J-7.00J	M+S	530	1168	300 44
195/55R16		87V	AU04	6J	5.50J-6.50J	M+S	545	1201	300 44
205/45R16	XL	87V	AU04	7J	6.50J-7.50J	M+S	545	1201	340 50
205/50R16		87V	AU04	6.5J	6.00J-7.00J	M+S	545	1201	300 44
205/50R16	XL	91V	AU04	6.5J	6.00J-7.00J	M+S	545	1201	300 44
205/55R16		91V	AU04	6.5J	6.00J-7.00J	M+S	670	1477	300 44
205/55ZR16	XL	94W	AU04	6.5J	6.00J-7.00J	M+S	670	1477	340 50
215/55R16		93V	AU04	7J	6.50J-7.50J	M+S	650	1433	300 44
215/55R16	XL	97W	AU04	7J	6.50J-7.50J	M+S	730	1609	340 50
225/55R16		95V	AU04	7J	6.50J-7.50J	M+S	690	1521	300 44
225/50ZR16		92Y	AU04	7J	6.50J-7.50J	M+S	630	1389	300 44
235/55R16		98V	AU04	7.5J	7.00J-8.00J	M+S	750	1653	300 44
245/50R16		97V	AU04	7.5J	7.00J-8.00J	M+S	730	1609	300 44
205/40R17	XL	84V	AU04	7.5J	7.00J-8.00J	M+S	500	1102	340 50
205/40R17		80V	AU04	7.5J	7.00J-8.00J	M+S	450	992	300 44
205/45R17	XL	88V	AU04	7J	6.50J-7.50J	M+S	560	1235	340 50
205/50ZR17	XL	93W	AU04	6.5J	6.00J-7.00J	M+S	650	1433	340 50
215/40ZR17		83Y	AU04	7.5J	7.00J-8.00J	M+S	487	1074	300 44
215/40ZR17	XL	87W	AU04	7.5J	7.00J-8.00J	M+S	545	1201	340 50
215/45ZR17	XL	91Y	AU04	7J	6.50J-7.50J	M+S	615	1356	340 50
225/45ZR17	XL	94W	AU04	7.5J	7.00J-8.00J	M+S	670	1477	340 50
225/45ZR17	XL	94Y	AU04	7.5J	7.00J-8.00J	M+S	615	1356	340 50
235/40ZR17		90Y	AU04	8.5J	8.00J-9.00J	M+S	600	1323	300 44
235/40ZR17	XL	94W	AU04	8.5J	8.00J-9.00J	M+S	600	1323	340 50
235/45ZR17		94W	AU04	8J	7.50J-8.50J	M+S	670	1477	300 44
235/45ZR17	XL	97W	AU04	8J	7.50J-8.50J	M+S	730	1609	340 50
245/40ZR17		91Y	AU04	8.5J	8.00J-9.00J	M+S	615	1356	300 44
245/45ZR17		95Y	AU04	8J	7.50J-8.50J	M+S	690	1521	300 44
245/45ZR17	XL	99W	AU04	8J	7.50J-8.50J	M+S	730	1609	340 50
275/55R17		109V	AU04	8.5J	8.00J-9.00J	M+S	1030	2271	300 44
215/35ZR18	XL	84Y	AU04	7.5J	7.00J-8.00J	M+S	500	1102	340 50
215/40ZR18	XL	89W	AU04	7.5J	7.00J-8.00J	M+S	580	1279	340 50
225/60R18		100V	AU04	6.5J	6.00J-7.00J	M+S	800	1764	300 44
225/40ZR18	XL	92W	AU04	8J	7.50J-8.50J	M+S	630	1389	340 50
225/45ZR18		95W	AU04	7.5J	7.00J-8.00J	M+S	690	1521	300 44
245/45ZR18	XL	100W	AU04	8J	7.50J-8.50J	M+S	800	1764	340 50



THE HIGH PERFORMANCE TYRE

The ideal tyre for drivers who seek the best value & balance of wet traction, dry traction, handling and good mileage. PrecisionAce provides excellence for durability, comfort, low noise and low rolling resistance. It also combines a modern, robust design with four circumferential grooves for optimum water evacuation with reliable handling. The PrecisionAce is an excellent replacement tyre for Original Equipment level High Performance tyres.



- Particularly suitable for the demands of everyday use
- 4 circumferential grooves for optimum water absorption
- Reinforced bars in the shoulder grooves for additional stability
- Continuous, solid central rib transfers lateral forces to help provide excellent stability at highway speed



PrecisionAce AH01
High Performance

COMFORT, WET HANDLING, LOW NOISE, SUMMER TREAD

PrecisionAce AH01

High Performance

COMFORT, WET HANDLING, LOW NOISE, SUMMER TREAD

SIZE	/XL	LI&SS	Pattern	RIM		M+S	UTQG			S/W Letter			EU Label Values				
				Standard	Approved		TREAD WERAR	TRACTION	TEMPERATURE	MAX. LOAD (kg)	MAX. LOAD (LBS)	MAX. PRESSURE		Noise Value (dB)	Noise Grade	RR	WET
												(kPa)	PSI				
175/65R14		82H	AH01	5.00J	4.50J-5.50J	-	360	A	A	475	1047	300	44	70	2	E	B
175/70R14		84T	AH01	5J	4.50J-5.50J	-	360	A	A	500	1102	300	44	70	2	E	B
185/60R14		82H	AH01	5.5J	5.00J-6.00J	-	360	A	A	475	1047	300	44	70	2	E	B
185/65R14		86H	AH01	5.5J	5.00J-6.00J	-	360	A	A	530	1168	300	44	70	2	E	B
185/70R14		88T	AH01	5.5J	5.00J-6.00J	-	360	A	A	560	1235	300	44	70	2	E	B
185/70R14		88H	AH01	5.5J	5.00J-6.00J	-	360	A	A	560	1235	300	44	70	2	E	B
195/60R14		86H	AH01	6J	5.50J-6.50J	-	360	A	A	530	1168	300	44	71	2	E	B
195/65R14		89H	AH01	6J	5.50J-6.50J	-	360	A	A	580	1279	300	44	71	2	E	B
195/70R14		91T	AH01	6J	5.50J-6.50J	-	360	A	A	615	1356	300	44	71	2	E	B
185/55R15		82V	AH01	6J	5.50J-6.50J	-	360	A	A	475	1047	300	44	70	2	E	B
185/60R15		84H	AH01	5.5J	5.00J-6.00J	-	360	A	A	500	1102	300	44	70	2	E	B
185/60R15	XL	88H	AH01	5.5J	5.00J-6.00J	-	360	A	A	560	1235	340	50	71	2	E	B
185/65R15		88H	AH01	5.5J	5.00J-6.00J	-	360	A	A	560	1235	300	44	70	2	E	B
185/65R15		88T	AH01	5.5J	5.00J-6.00J	-	360	A	A	560	1235	300	44	70	2	E	B
185/65R15		88H	AH01	5.5J	5.00J-6.00J	M+S	360	A	A	560	1235	300	44	-	-	-	-
185/65R15	XL	92H	AH01	5.5J	5.00J-6.00J	-	360	A	A	630	1389	340	50	71	2	E	B
195/50R15		82H	AH01	6J	5.50J-6.50J	-	360	A	A	475	1047	300	44	71	2	E	B
195/50R15		82V	AH01	6J	5.50J-6.50J	-	360	A	A	475	1047	300	44	71	2	E	B
195/55R15		85V	AH01	6J	5.50J-6.50J	M+S	360	A	A	515	1135	300	44	-	-	-	-
195/60R15		88V	AH01	6J	5.50J-6.50J	-	360	A	A	560	1235	300	44	71	2	E	B
195/60R15		88H	AH01	6J	5.50J-6.50J	-	360	A	A	560	1235	300	44	71	2	E	B
195/65R15		91S	AH01	6J	5.50J-6.50J	M+S	360	A	A	615	1356	300	44	-	-	-	-
195/65R15		91V	AH01	6J	5.50J-6.50J	-	360	A	A	615	1356	300	44	71	2	E	B
195/65R15		91H	AH01	6J	5.50J-6.50J	-	360	A	A	615	1356	300	44	71	2	E	B
195/65R15	XL	95T	AH01	6J	5.50J-6.50J	-	360	A	A	690	1521	340	50	72	2	E	B
195/65R15	XL	95H	AH01	6J	5.50J-6.50J	-	360	A	A	690	1521	340	50	72	2	E	B
205/60R15		91H	AH01	6J	5.50J-6.50J	-	360	A	A	615	1356	300	44	71	2	E	B
205/60R15		91V	AH01	6J	5.50J-6.50J	-	360	A	A	615	1356	300	44	71	2	E	B
205/65R15		94H	AH01	6J	5.50J-6.50J	-	360	A	A	670	1477	300	44	71	2	E	B
205/65R15		94V	AH01	6J	5.50J-6.50J	-	360	A	A	670	1477	300	44	71	2	E	B
205/70R15		96H	AH01	6J	5.50J-6.50J	M+S	360	A	A	710	1565	300	44	-	-	-	-
215/60R15		94H	AH01	6.5J	6.00J-7.00J	M+S	360	A	A	670	1477	300	44	-	-	-	-
215/65R15		96H	AH01	6.5J	6.00J-7.00J	-	360	A	A	710	1565	300	44	71	2	E	B
215/65R15	XL	100H	AH01	6.5J	6.00J-7.00J	-	360	A	A	710	1565	340	50	72	2	E	B
195/45R16		80V	AH01	6.5J	6.00J-7.00J	-	360	A	A	450	992	300	44	71	2	E	B
195/45R16	XL	84W	AH01	6.5J	6.00J-7.00J	-	360	A	A	500	1102	340	50	72	2	E	B
195/45R16	XL	84V	AH01	6.5J	6.00J-7.00J	-	360	A	A	500	1102	340	50	72	2	E	B
195/50R16	XL	88V	AH01	6J	5.50J-6.50J	-	360	A	A	560	1235	300	44	72	2	E	B
195/60R16		89H	AH01	6J	5.50J-6.50J	M+S	360	A	A	580	1279	300	44	-	-	-	-
205/50R16		87H	AH01	6.5J	6.00J-7.00J	-	360	A	A	545	1201	300	44	71	2	E	B

PrecisionAce AH01

High Performance

COMFORT, WET HANDLING, LOW NOISE, SUMMER TREAD

SIZE	/XL	LI&SS	Pattern	RIM		M+S	UTQG			S/W Letter			EU Label Values				
				Standard	Approved		TREAD WERAR	TRACTION	TEMPERATURE	MAX. LOAD (kg)	MAX. LOAD (LBS)	MAX. PRESSURE		Noise Value (dB)	Noise Grade	RR	WET
												(kPa)	PSI				
205/50R16		87V	AH01	6.5J	6.00J-7.00J	-	360	A	A	545	1201	300	44	71	2	E	B
205/55R16		91V	AH01	6.5J	6.00J-7.00J	-	360	A	A	615	1356	300	44	71	2	C	B
205/55R16		91H	AH01	6.5J	6.00J-7.00J	-	360	A	A	615	1356	300	44	71	2	C	B
205/60R16		92H	AH01	6J	5.50J-6.50J	-	360	A	A	630	1389	300	44	71	2	E	B
205/60R16		92V	AH01	6J	5.50J-6.50J	-	360	A	A	630	1389	300	44	71	2	E	B
215/55R16		93V	AH01	7J	6.50J-7.50J	-	360	A	A	650	1433	300	44	71	2	C	B
215/55R16	XL	97V	AH01	7J	6.50J-7.50J	-	360	A	A	730	1609	340	50	72	2	C	B
215/60R16		95H	AH01	6.5J	6.00J-7.00J	-	360	A	A	690	1521	300	44	71	2	E	B
215/60R16		95V	AH01	6.5J	6.00J-7.00J	M+S	360	A	A	690	1521	300	44	-	-	-	-
215/65R16		98H	AH01	6.5J	6.00J-7.00J	-	360	A	A	750	1653	300	44	71	2	E	B
225/50R16	XL	96W	AH01	7J	6.50J-7.50J	-	360	A	A	710	1565	340	50	72	2	C	B
225/50R16		92V	AH01	7J	6.50J-7.50J	-	360	A	A	630	1389	300	44	71	2	C	B
225/55R16		95H	AH01	7J	6.50J-7.50J	M+S	360	A	A	690	1521	300	44	-	-	-	-
225/55R16		95W	AH01	7J	6.50J-7.50J	-	360	A	A	690	1521	300	44	71	2	C	B
225/55R16	XL	99W	AH01	7J	6.50J-7.50J	-	360	A	A	775	1709	340	50	72	2	C	B
225/60R16		98H	AH01	6.5J	6.00J-7.00J	-	360	A	A	750	1653	300	44	71	2	E	B
215/50R17		91V	AH01	7J	6.50J-7.50J	-	360	A	A	615	1356	300	44	71	2	C	B
215/55R17	XL	98V	AH01	7J	6.50J-7.50J	M+S	360	A	A	750	1653	340	50	-	-	-	-
215/55R17	XL	98W	AH01	7J	6.50J-7.50J	-	360	A	A	750	1653	340	50	72	2	C	B
215/55R17		94V	AH01	7J	6.50J-7.50J	M+S	360	A	A	670	1477	300	44	-	-	-	-
225/55R17		97W	AH01	7J	6.50J-7.50J	-	360	A	A	825	1819	300	44	71	2	C	B
225/55R17	XL	101W	AH01	7J	6.50J-7.50J	-	360	A	A	825	1819	340	50	72	2	C	B
225/60R17		99H	AH01	6.5J	6.00J-7.00J	M+S	360	A	A	775	1709	300	44	-	-	-	-
225/60R17		99V	AH01	6.5J	6.00J-7.00J	-	360	A	A	775	1709	300	44	71	2	E	B
225/65R17		102H	AH01	6.5J	6.00J-7.00J	M+S	360	A	A	850	1874	300	44	-	-	-	-

**FOLLOW US TO
INNOVATIVE TECHNOLOGY
AND SUSTAINABILITY**

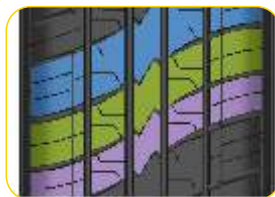


THE ECONOMIC TYRE

The ideal tyre for drivers, who appreciate a reliable tyre with a good balance of quality Value. The GreenAce combines excellent handling characteristics with comfort and reliability and is characterized by a long service life.



Particularly suitable for the demands of everyday use
Reinforced bars in the shoulder grooves for perfect stability & reduce tread squirm



Optimized tread pattern for high tyre mileage ('bolt' design)
Long mileage and multi-directional profile helps deliver superb dry handling while maintaining wet handling.

SIZE	/XL	LI&SS	Pattern	RIM		M+S	UTQG			S/W Letter		EU Label Values					
				Standard	Approved		TREAD WERAR	TRACTION	TEMPERATURE	MAX. LOAD (kg)	MAX. LOAD (LBS)	MAX. PRESSURE (kPa)	PSI	Noise Value (dB)	Noise Grade	RR	WET
155/70R13		75T	AG02	4.50B	4.00B-5.00B	-	380	A	A	387	853	300	44	70	2	F	B
155/80R13		79T	AG02	4.50B	4.00B-5.00B	-	380	A	A	437	963	300	44	70	2	E	B
165/65R13		77T	AG02	5B	4.5B-5.5B	M+S	380	A	A	412	908	300	44	-	-	-	-
165/70R13		79T	AG02	5.00B	4.50B-5.50B	-	380	A	A	437	963	300	44	70	2	E	B
165/70R13	XL	83T	AG02	5.00B	4.50B-5.50B	-	380	A	A	487	1074	340	50	70	2	E	B
165/80R13		83T	AG02	4.50B	4.00B-5.00B	-	380	A	A	487	1074	300	44	70	2	E	B
165/80R13	XL	87T	AG02	4.50B	4.00B-5.00B	-	380	A	A	545	1201	340	50	70	2	E	B
175/60R13		77T	AG02	5B	4.5B-5.5B	M+S	380	A	A	412	908	300	44	-	-	-	-
175/70R13		82T	AG02	5.00B	4.50B-5.50B	-	380	A	A	475	1047	300	44	70	2	E	B
175/70R13	XL	86T	AG02	5.00B	4.50B-5.50B	-	380	A	A	530	1168	340	50	70	2	E	B
185/70R13		86T	AG02	5.50B	5.00B-6.00B	-	380	A	A	530	1168	300	44	70	2	E	B
165/60R14		75L	AG02	5.00B	4.50B-5.50B	M+S	380	A	A	387	853	300	44	70	2	F	B
165/60R14		75T	AG02	5.00B	4.50B-5.50B	M+S	380	A	A	387	853	300	44	-	-	-	-
165/65R14	XL	83T	AG02	5J	4.5J-5.5J	M+S	380	A	A	487	1074	340	50	-	-	-	-
165/70R14		81T	AG02	5.00J	4.50J-5.50J	-	380	A	A	462	1019	300	44	70	2	E	B
165/70R14	XL	85T	AG02	5.00J	4.50J-5.50J	-	380	A	A	515	1135	340	50	70	2	E	B
175/65R14		82H	AG02	5.00J	4.50J-5.50J	-	380	A	A	475	1047	300	44	70	2	E	B
175/65R14		82T	AG02	5.00J	4.50J-5.50J	-	380	A	A	475	1047	300	44	70	2	E	B
175/65R14	XL	86T	AG02	5.00J	4.50J-5.50J	-	380	A	A	475	1047	340	50	70	2	E	B
205/60R14		88H	AG02	6J	5.50J-6.50J	M+S	380	A	A	560	1235	300	44	-	-	-	-

General Use GreenAce AG02
LONG MILEAGE, COMFORT, LOW NOISE, SUMMER TREAD, ECO



LONG MILEAGE TYRE

Aeolus GreenAce AG01 is designed for taxi, cabs and economic cars. Its flexibility, long mileage, safety and fuel efficiency character meets the needs of people, can be the best choice for taxis and the economic cars.



Three circumferential grooves improve wet grip by evacuating water from underneath the tread area and improves lateral wet traction.



New Aeolus technically advanced silica compounding and large shoulder block design provides long mileage and improves cornering and braking.



Jointless bead wire increases overall tyre uniformity for improved ride quality.

SIZE	/XL	LI&SS	Pattern	RIM		M+S	UTQG			S/W Letter		MAX. PRESSURE	
				Standard	Approved		TREAD WEAR	TRAC TION	TEMPER ATURE	MAX. LOAD (kg)	MAX. LOAD (LBS)	(kPa)	PSI
165/70R13		79T	AG01	5.00B	4.50B-5.50B	M+S	480	A	A	437	963	300	44
175/70R13		82T	AG01	5.00B	4.50B-5.50B	M+S	480	A	A	475	1047	300	44
185/60R14		82T	AG01	5.5J	5.00J-6.00J	M+S	480	A	A	475	1047	300	44
195/60R14		86T	AG01	6J	5.50J-6.50J	M+S	480	A	A	530	1168	300	44
185/65R15		88T	AG01	5.5J	5.00J-6.00J	M+S	480	A	A	560	1235	300	44
195/55R15		85H	AG01	6J	5.50J-6.50J	M+S	480	A	A	515	1135	300	44
195/60R15		88H	AG01	6J	5.50J-6.50J	M+S	480	A	A	560	1235	300	44
195/65R15		91H	AG01	6J	5.50J-6.50J	M+S	480	A	A	615	1356	300	44



GreenAce AG01
COMFORT, LOW NOISE, SUMMER TREAD, LONG MILEAGE.

AEOLUS TYRE / PCR

All season tyre

All season tyre

AEOLUS TYRE PCR

- All Season
- UHP
- HP
- HP
- Touring tyre
- SteeringAce AU02
- PrecisionAce AH02
- 4SeasonAce AA01
- TouringAce AG03

UHP All Season AU02 Pattern

The Aeolus AU02 is our newest value ultra-high performance all season W rated tire to provide improved handling for drivers who demand higher performance levels to replace many original equipment fitments



Tested in TVTC , Texas, USA



Silicon compound in tread, less rolling resistance, fuel efficient and environmental friendly.

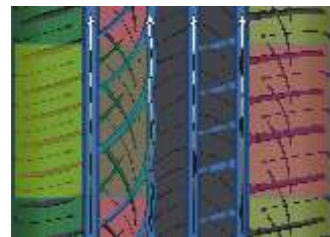


SteeringAce AU02

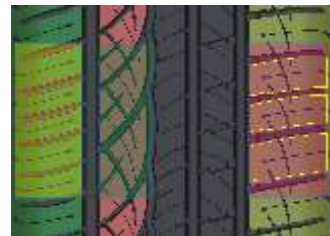
Ultra High Performance All season
SPORTY, ASYMMETRICAL,
M+S, WET HANDLING, LOW NOISE



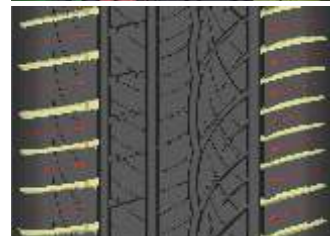
Tested in TVTC , Texas, USA



- 1) The crisscross and asymmetric pattern is beautiful and could improve the performance on wet and snowy land.
- 2) The small patterns inside could help to add transverse grooves, with the wide longitudinal grooves ensure excellent performance in snowy land and dewatering .



- 3) Large pattern on the outboard, together with the small transverse grooves could improve the wheel and handle performance in the snowy land.



- 4) More optimizing in the pitch and silent groove design in the shoulders could not only increase the comfort but also decrease the noise.

SteeringAce AU02

Ultra High Performance All season
SPORTY, ASYMMETRICAL,
M+S, WET HANDLING, LOW NOISE

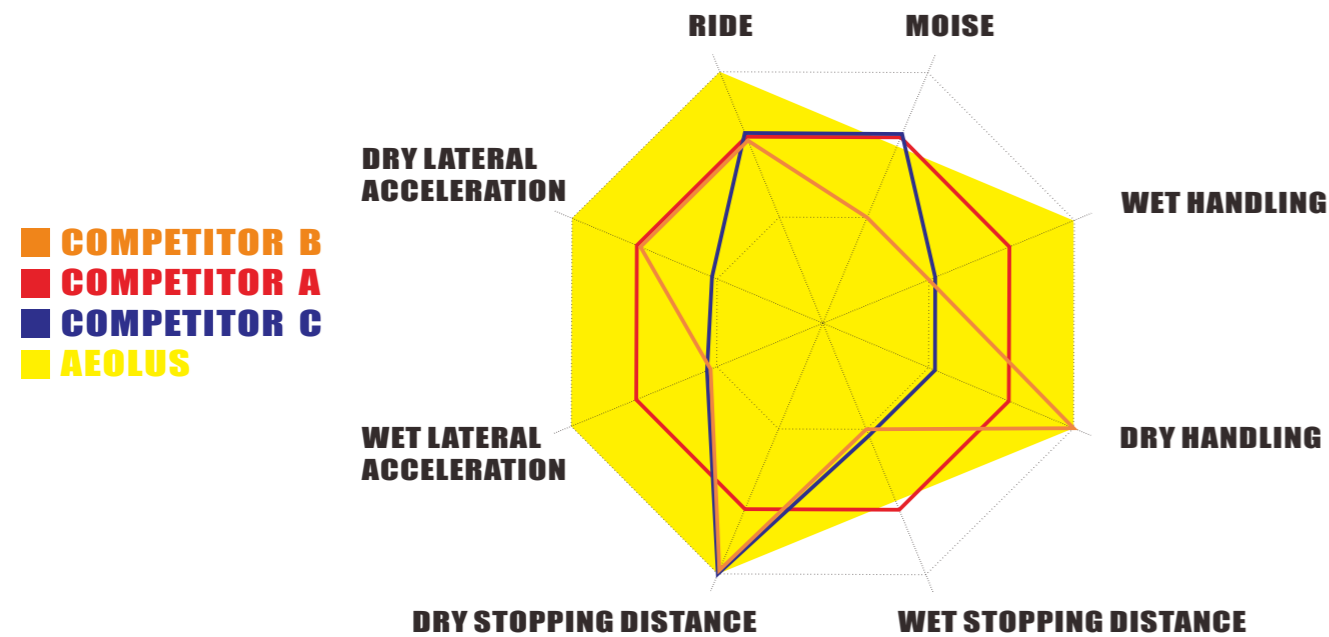
SIZE	/XL	LI&SS	Pattern	RIM		M+S	UTQG			S/W Letter		MAX. PRESSURE	
				Standard	Approved		TREAD WEAR	TRACTION	TEMPERATURE	MAX. LOAD (kg)	MAX. LOAD (LBS)	(kPa)	PSI
195/55R15		85V	AU02	6J	5.50J-6.50J	M+S	440	AA	A	515	1135	300	44
195/50ZR16		84W	AU02	6J	5.50J-6.50J	M+S	440	AA	A	500	1102	300	44
205/50ZR16		87W	AU02	6.5J	6.00J-7.00J	M+S	440	AA	A	545	1201	300	44
205/55ZR16		91W	AU02	6.5J	6.00J-7.00J	M+S	440	AA	A	615	1356	300	44
215/55ZR16		93W	AU02	7J	6.50J-7.50J	M+S	440	AA	A	650	1433	300	44
225/50ZR16		92W	AU02	7J	6.50J-7.50J	M+S	440	AA	A	630	1389	300	44
225/55ZR16		95W	AU02	7J	6.50J-7.50J	M+S	440	AA	A	690	1521	300	44
205/40ZR17	XL	84W	AU02	7.5J	7.00J-8.00J	M+S	420	AA	A	500	1102	340	50
205/45ZR17	XL	88W	AU02	7J	6.50J-7.50J	M+S	440	AA	A	560	1235	340	50
205/50ZR17	XL	93W	AU02	6.5J	6.00J-7.00J	M+S	440	AA	A	650	1433	340	50
215/55R17		94V	AU02	7J	6.50J-7.50J	M+S	440	AA	A	670	1477	300	44
215/45ZR17	XL	91W	AU02	7J	6.50J-7.50J	M+S	440	AA	A	615	1356	340	50
215/50ZR17	XL	95W	AU02	7J	6.50J-7.50J	M+S	440	AA	A	690	1521	340	50
225/45ZR17	XL	94W	AU02	7.5J	7.00J-8.00J	M+S	440	AA	A	670	1477	340	50
225/50ZR17	XL	98W	AU02	7J	6.50J-7.50J	M+S	440	AA	A	750	1653	340	50
225/55ZR17		97W	AU02	7J	6.50J-7.50J	M+S	440	AA	A	730	1609	300	44
235/45ZR17	XL	97W	AU02	8J	7.50J-8.50J	M+S	440	AA	A	730	1609	340	50
235/50ZR17		96W	AU02	7.5J	7.00J-8.00J	M+S	440	AA	A	710	1565	300	44
235/55ZR17		99W	AU02	7.5J	7.00J-8.00J	M+S	440	AA	A	775	1709	300	44
245/40ZR17		91W	AU02	8.5J	8.00J-9.00J	M+S	420	AA	A	615	1356	300	44
245/45ZR17		95W	AU02	8J	7.50J-8.50J	M+S	440	AA	A	690	1521	300	44
245/50ZR17		99W	AU02	7.5J	7.00J-8.00J	M+S	440	AA	A	775	1709	300	44
255/40ZR17		94W	AU02	9J	8.50J-9.50J	M+S	420	AA	A	670	1477	300	44
275/40ZR17		98W	AU02	9.5J	9.00J-10.0J	M+S	420	AA	A	750	1653	300	44
225/40ZR18	XL	92W	AU02	8J	7.50J-8.50J	M+S	420	AA	A	630	1389	340	50
225/45ZR18	XL	95W	AU02	7.5J	7.00J-8.00J	M+S	440	AA	A	690	1521	340	50
225/50ZR18		95W	AU02	7J	6.50J-7.50J	M+S	440	AA	A	690	1521	300	44
235/40ZR18	XL	95W	AU02	8.5J	8.00J-9.00J	M+S	420	AA	A	690	1521	340	50
235/45ZR18	XL	98W	AU02	8J	7.50J-8.50J	M+S	440	AA	A	750	1653	340	50
235/50ZR18		97W	AU02	7.5J	7.00J-8.00J	M+S	440	AA	A	730	1609	300	44
245/40ZR18	XL	97W	AU02	8.5J	8.00J-9.00J	M+S	420	AA	A	730	1609	340	50
245/45ZR18	XL	100W	AU02	8J	7.50J-8.50J	M+S	440	AA	A	800	1764	340	50
255/35ZR18	XL	94W	AU02	9J	8.50J-9.50J	M+S	420	AA	A	670	1477	340	50
255/40ZR18	XL	99W	AU02	9J	8.50J-9.50J	M+S	420	AA	A	775	1709	340	50
265/35ZR18	XL	97W	AU02	9.5J	9.00J-10.0J	M+S	420	AA	A	730	1609	340	50
245/40ZR19		94W	AU02	8.5J	8.00J-9.00J	M+S	420	AA	A	670	1477	300	44
255/45ZR20	XL	105W	AU02	8.5J	8.00J-9.00J	M+S	440	AA	A	925	2039	340	50



HP All Season AH02 Pattern

The Aeolus PrecisionAce AH02 All Season tire met or exceeded all of the other tyres in the TVTC test in America.

PrecisionAce AH02
High Performance All season
SYMMETRICAL,
M+S, WET HANDLING, LOW NOISE



Compound of SSBR and BR in the tread, together with super abrasionfurnace black, decrease the wear and provide excellent handling performance.

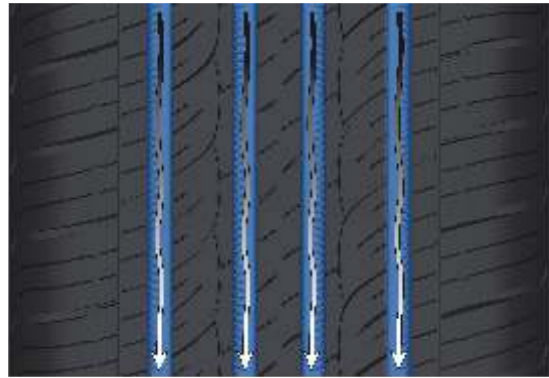


PrecisionAce AH02

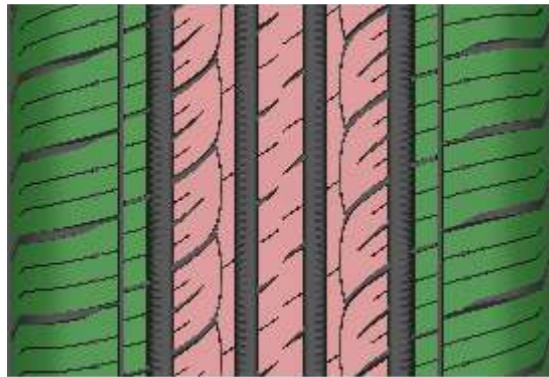
High Performance All season

SYMMETRICAL,

M+S, WET HANDLING, LOW NOISE



The bionically non-smoothed surface in the four longitudinal grooves, provide the excellent water evacuation and decrease the noise at the same time.



The central stiffener design have good handling performance, it can increase the comfort and decrease the noise.

The wide design in the shoulder could improve the brake performance when turning and increase the range at the same time, besides, it also ensures the UTQG rating of 440/AA/A.



Silent groove design in the shoulders could not only increase the comfort but also decrease the noise.



SIZE	/XL	LI&SS	PR	Pattern	RIM		M+S	UTQG			S/W Letter		MAX. PRESSURE	
					Standard	Approved		TREAD WEAR	TRACTION	TEMPERATURE	MAX. LOAD (kg)	MAX. LOAD (LBS)	(kPa)	PSI
P175/70R14		84T	4	AH02	5J	4.50J-5.50J	M+S	440	AA	A	500	1102	300	44
P185/65R14		86H	4	AH02	5.5J	5.00J-6.00J	M+S	440	AA	A	530	1168	300	44
P185/65R15		88H	4	AH02	5.5J	5.00J-6.00J	M+S	440	AA	A	560	1235	300	44
P195/55R15		85V	4	AH02	6J	5.50J-6.50J	M+S	440	AA	A	515	1135	300	44
P195/60R15		88H	4	AH02	6J	5.50J-6.50J	M+S	440	AA	A	560	1235	300	44
P195/65R15		91H	4	AH02	6J	5.50J-6.50J	M+S	440	AA	A	615	1356	300	44
P205/60R15		91H	4	AH02	6J	5.50J-6.50J	M+S	440	AA	A	615	1356	300	44
P205/65R15		94H	4	AH02	6J	5.50J-6.50J	M+S	440	AA	A	670	1477	300	44
P215/60R15		94H	4	AH02	6.5J	6.00J-7.00J	M+S	440	AA	A	670	1477	300	44
P215/65R15		96V	4	AH02	6.5J	6.00J-7.00J	M+S	440	AA	A	710	1565	300	44
225/70R16		103T	4	AH02	6.5J	6.00J-7.00J	M+S	440	AA	A	875	1929	300	44
P195/55R16		87V	4	AH02	6J	5.50J-6.50J	M+S	440	AA	A	545	1201	300	44
P205/50R16		87H	4	AH02	6.5J	6.00J-7.00J	M+S	440	AA	A	545	1201	300	44
P205/55R16		91H	4	AH02	6.5J	6.00J-7.00J	M+S	440	AA	A	615	1356	300	44
P205/55R16		91V	4	AH02	6.5J	6.00J-7.00J	M+S	440	AA	A	615	1356	300	44
P205/60R16		92H	4	AH02	6J	5.50J-6.50J	M+S	440	AA	A	630	1389	300	44
P205/65R16		95H	4	AH02	6J	5.50J-6.50J	M+S	440	AA	A	690	1521	300	44
P215/55R16		93H	4	AH02	7J	6.50J-7.50J	M+S	440	AA	A	650	1433	300	44
P215/60R16		95H	4	AH02	6.5J	6.00J-7.00J	M+S	440	AA	A	690	1521	300	44
P215/65R16		98H	4	AH02	6.5J	6.00J-7.00J	M+S	440	AA	A	750	1653	300	44
P225/55R16		95H	4	AH02	7J	6.50J-7.50J	M+S	440	AA	A	690	1521	300	44
P225/60R16		98H	4	AH02	6.5J	6.00J-7.00J	M+S	440	AA	A	750	1653	300	44
P235/60R16		100H	4	AH02	7J	6.50J-7.50J	M+S	440	AA	A	800	1764	300	44
P205/50R17	XL	93V	4	AH02	6.5J	6.00J-7.00J	M+S	440	AA	A	650	1433	340	50
P215/45R17		87H	4	AH02	7J	6.50J-7.50J	M+S	440	AA	A	545	1201	300	44
P215/50R17		91V	4	AH02	7J	6.50J-7.50J	M+S	440	AA	A	615	1356	300	44
P215/55R17		94V	4	AH02	7J	6.50J-7.50J	M+S	440	AA	A	670	1477	300	44
P215/60R17		96H	4	AH02	6.5J	6.00J-7.00J	M+S	440	AA	A	710	1565	300	44
P225/50R17		94V	4	AH02	7J	6.50J-7.50J	M+S	440	AA	A	670	1477	300	44
P225/55R17		97V	4	AH02	7J	6.50J-7.50J	M+S	440	AA	A	730	1609	300	44
P225/65R17		102H	4	AH02	6.5J	6.00J-7.00J	M+S	440	AA	A	850	1874	300	44
P235/55R17		99V	4	AH02	7.5J	7.00J-8.00J	M+S	440	AA	A	775	1709	300	44
P235/65R17		104H	4	AH02	7J	6.50J-7.50J	M+S	440	AA	A	900	1984	300	44
P225/60R18		100H	4	AH02	6.5J	6.00J-7.00J	M+S	440	AA	A	800	1764	300	44
P235/50R18		97V	4	AH02	7.5J	7.00J-8.00J	M+S	440	AA	A	730	1609	300	44



AEOLUS TYRES
Technology Meets Performance

4SeasonAce AA01

Aeolus 4SeasonAce AA01 is the perfect combination of summer and winter tyres for all weather conditions.

AA01 also passed the labelling test & SNOW TRACTION TEST of E.U.



Subjective Test in Ivalo, Finland, Feb. 2014

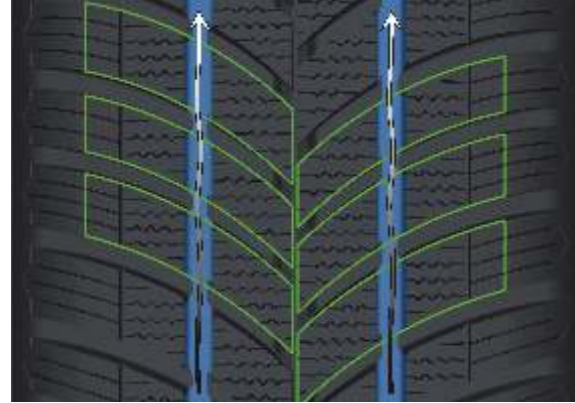


4SeasonAce AA01
ALL SEASON TYRE COMFORT
M+S WET AND SNOW HANDLING

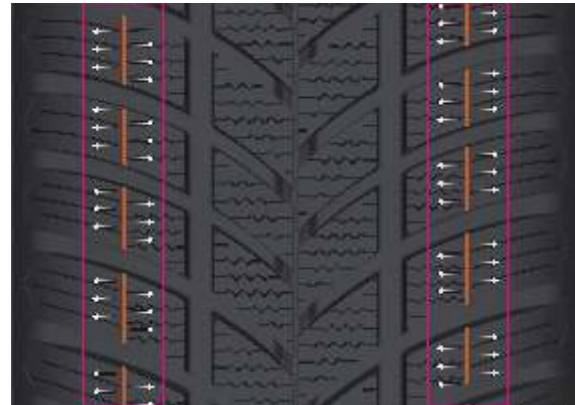


4SeasonAce AA01

ALL SEASON TYRE COMFORT
M+S WET AND SNOW HANDLING



Two wide longitudinal groove evacuate water easily and guarantee stable handling.



The variable pitch design with internal, external pitch dislocation arrangement, effectively reduce the tyre noise, offering quiet and comfortable drive.



V shape directional design of the groove offers superior traction for your drive.



Different pattern design of the crown and shoulder offers perfect balance of winter and summer tyre characteristic, making sure that the all season tyre can offer the wet and dry performance of a summer tyre, combined with the performance of a winter tyre on the snow.

SIZE	/XL	LI&SS	Pattern	RIM		M+S	UTQG			S/W Letter		EU Label Values					
				Standard	Approved		TREAD WEAR	TRACTION	TEMPERATURE	MAX. LOAD (kg)	MAX. LOAD (LBS)	MAX. PRESSURE		Noise Value (dB)	Noise Grade	RR	WET
												(kPa)	PSI				
155/70R13		75T	AA01	4.5B	4.00B-5.00B	M+S	300	A	A	387	853	300	44				
165/70R13		79T	AA01	5B	4.5B-5.5B	M+S	300	A	A	437	963	300	44				
175/70R13		82T	AA01	5B	4.5B-5.5B	M+S	300	A	A	475	1047	300	44				
155/65R14		75T	AA01	4.5J	4J-5J	M+S	300	A	A	387	853	300	44				
175/65R14		82T	AA01	5J	4.50J-5.50J	M+S	300	A	A	475	1047	300	44				
185/60R14		82H	AA01	5.5J	5.00J-6.00J	M+S	300	A	A	475	1047	300	44				
185/65R14		86H	AA01	5.5J	5.00J-6.00J	M+S	300	A	A	530	1168	300	44				
185/65R15		88T	AA01	5.5J	5.00J-6.00J	M+S	300	A	A	560	1235	300	44				
185/65R15		88H	AA01	5.5J	5.00J-6.00J	M+S	300	A	A	560	1235	300	44				
195/50R15		82H	AA01	6J	5.50J-6.50J	M+S	300	A	A	475	1047	300	44				
195/55R15		85H	AA01	6J	5.50J-6.50J	M+S	300	A	A	515	1135	300	44				
195/60R15		88H	AA01	6J	5.50J-6.50J	M+S	300	A	A	560	1235	300	44				
195/60R15		88V	AA01	6J	5.50J-6.50J	M+S	300	A	A	560	1235	300	44				
195/65R15		91T	AA01	6J	5.50J-6.50J	M+S	300	A	A	615	1356	300	44				
195/65R15		91H	AA01	6J	5.50J-6.50J	M+S	300	A	A	615	1356	300	44				
195/65R15		91V	AA01	6J	5.50J-6.50J	M+S	300	A	A	615	1356	300	44				
205/55R16		91H	AA01	6.5J	6.00J-7.00J	M+S	300	A	A	615	1356	300	44	72	2	C	C
205/55R16		91V	AA01	6.5J	6.00J-7.00J	M+S	300	A	A	615	1356	300	44	72	2	C	C



ALL SEASON TOURING TYRE

The Aeolus TouringAce AG03 is a symmetrical, premium ECO all-season touring tire for compact cars, sedans, minivans and crossover vehicles. The TouringAce is an excellent choice for family transportation. Specifically engineered to reduce rolling resistance and improve fuel mileage.

Touring Ace AG03
COMFORT, LOW NOISE, LONG MILEAGE
M+S, ECO-FRIENDLY

The AEOLUS TouringACE AG03 is a high performance all-season touring tyre designed for premium touring vehicles. Aeolus Self-development low rolling resistance and hard-wear tread compound reduces the fuel consumption and provides long mileage.



Touring Ace AG03

COMFORT, LOW NOISE, LONG MILEAGE
M+S, ECO-FRIENDLY



Center rib design and slant small trench improves on-line steering feel, stability and tread wear; creates better comfort and lower noise levels.



Wide shoulder block design improves long mileage, cornering and braking.



Four circumferential grooves maximize wet traction by improving water evacuation to minimize hydroplaning on wet roads.



Optimized pitch arrangement on the tread disperses the noise effectively.

SIZE	/XL	LI&SS	Pattern	RIM		M+S	UTQG			S/W Letter				time to market
				Standard	Approved		TREAD WEAR	TRACTION	TEMPERATURE	MAX. LOAD (kg)	MAX. LOAD (LBS)	MAX. PRESSURE		
												(kPa)	PSI	
P185/65R14		86T	AG03	5.5J	5.00J-6.00J	M+S	700	A	B	530	1168	300	44	2013.09
P195/70R14		91T	AG03	6J	5.50J-6.50J	M+S	700	A	B	615	1356	300	44	2013.09
P185/65R15		88T	AG03	5.5J	5.00J-6.00J	M+S	700	A	B	560	1235	300	44	2013.09
P195/60R15		88T	AG03	6J	5.50J-6.50J	M+S	700	A	B	560	1235	300	44	2013.08
P195/65R15		91T	AG03	6J	5.50J-6.50J	M+S	700	A	B	615	1356	300	44	2013.08
P205/65R15		94T	AG03	6J	5.50J-6.50J	M+S	700	A	B	670	1477	300	44	2013.09
P205/70R15		96T	AG03	6J	5.50J-6.50J	M+S	700	A	B	710	1565	300	44	2013.09
P205/75R15		97T	AG03	5.5J	5.00J-6.00J	M+S	700	A	B	730	1609	300	44	2013.09
P215/70R15		98T	AG03	6.5J	6.00J-7.00J	M+S	700	A	B	750	1653	300	44	2013.09
P215/75R15		100T	AG03	6J	5.50J-6.50J	M+S	700	A	B	800	1764	300	44	2013.09
P225/70R15		100T	AG03	6.5J	6.00J-7.00J	M+S	700	A	B	800	1764	300	44	2013.09
P225/75R15		102T	AG03	6J	6.00J-6.50J	M+S	700	A	B	850	1874	300	44	2013.08
P235/70R15		103T	AG03	7J	6.50J-7.50J	M+S	700	A	B	875	1929	300	44	2013.08
P235/75R15		105T	AG03	6.5J	6.00J-7.00J	M+S	700	A	B	925	2039	300	44	2013.08
P235/75R15	XL	109T	AG03	6.5J	6.00J-7.00J	M+S	700	A	B	1030	2271	340	50	2013.08
235/65R16		103T	AG03	7J	6.50J-7.50J	M+S	700	A	B	875	1929	300	44	2013.08
P205/55R16		91T	AG03	6.5J	6.00J-7.00J	M+S	700	A	B	615	1356	300	44	2013.08
P205/60R16		92T	AG03	6J	5.50J-6.50J	M+S	700	A	B	630	1389	300	44	2013.08
P215/60R16		95T	AG03	6.5J	6.00J-7.00J	M+S	700	A	B	690	1521	300	44	2013.08
P215/65R16		98T	AG03	6.5J	6.00J-7.00J	M+S	700	A	B	750	1653	300	44	2013.09
P215/70R16		100T	AG03	6.5J	6.00J-7.00J	M+S	700	A	B	800	1764	300	44	2013.09
P225/60R16		98T	AG03	6.5J	6.00J-7.00J	M+S	700	A	B	750	1653	300	44	2013.09
P225/70R16		103T	AG03	6.5J	6.00J-7.00J	M+S	700	A	B	875	1929	300	44	2013.08
P235/70R16		106T	AG03	7J	6.50J-7.50J	M+S	700	A	B	950	2094	300	44	2013.08
P235/65R17		104T	AG03	7J	6.50J-7.50J	M+S	700	A	B	900	1984	300	44	2013.09
P235/65R18		106T	AG03	7J	6.50J-7.50J	M+S	700	A	B	950	2094	300	44	2013.09



Winter Tyre-----Central Europe HP
-----Central Europe General Use
-----Nordic Friction
-----Nordic Studdable
SnowAce AW03
SnowAce AW02
SnowAce AW01
Ice Challenger AW05

AEOLUS TYRE PCR

Winter tyre

AEOLUS WINTER TYRES OF THE SNOW ACE SERIES USE STATE OF THE ART TYRE TECHNOLOGY UTILIZING THE MOST CURRENT COMPOUNDS AND SILICA TECHNOLOGY. THEY WERE PARTICULARLY DEVELOPED WITH CENTRAL EUROPEAN WINTER WEATHER CONDITIONS, DYNAMIC DRIVING STABILITY, SNOW TRACTION AND SAFETY IN MIND.

AEOLUS WINTER TYRE ALSO PASS THE WINTER TYRE COMPARISON WITH PREMIUM BRAND TEST IN IVALO, FINLAND.

AEOLUS WINTER TYRE MEETS THE SEVERE SNOW SERVICE REQUIREMENT OF THE RUBBER MANUFACTURER'S ASSOCIATION (RMA) AND THE STANDARDS OF EU REGULATION.



CENTRAL EUROPE HP WINTER TYRE

The Aeolus SnowAce Aw03 provides the maximum performance for central Europe winter conditions.

A directional V tread design, provides maximum grip, precise steering performance, and excellent handling for dry and wet for severe winter weather conditions.



Test in Ivalo Finland



SnowAce AW03
HIGH PERFORMANCE, WINTER



SnowAce AW03
HIGH PERFORMANCE, WINTER

SIZE	/XL	LI&SS	Pattern	RIM		M+S	S/W Letter			EU Label Values				time to market	
				Standard	Approved		MAX. LOAD (kg)	MAX. LOAD (LBS)	MAX. PRESSURE		Noise Value (dB)	Noise Grade	RR		WET
									(kPa)	PSI					
195/50R15	XL	86H	AW03	6J	5.50J-6.50J	M+S	530	1168	340	50	72	2	E	E	2013.06
205/55R16		91H	AW03	6.5J	6.00J-7.00J	M+S	615	1356	300	44	72	2	E	E	
205/55R16	XL	94H	AW03	6.5J	6.00J-7.00J	M+S	670	1477	340	50	72	2	E	E	2013.06
205/55R16	XL	94V	AW03	6.5J	6.00J-7.00J	M+S	670	1477	340	50	72	2	E	E	2013.06
205/60R16		92Q	AW03	6J	5.50J-6.50J	M+S	630	1389	300	44	-	-	-	-	2013.08
205/60R16		92H	AW03	6J	5.50J-6.50J	M+S	630	1389	300	44	72	2	E	E	
205/60R16	XL	96H	AW03	6J	5.50J-6.50J	M+S	710	1565	340	50	72	2	E	E	2013.06
215/55R16		93Q	AW03	7J	6.50J-7.50J	M+S	650	1433	340	50	-	-	-	-	2013.08
215/55R16	XL	97V	AW03	7J	6.50J-7.50J	M+S	730	1609	340	50	72	2	E	E	2013.06
215/60R16		95Q	AW03	6.5J	6.00J-7.00J	M+S	690	1521	340	50	-	-	-	-	2013.08
215/60R16	XL	99H	AW03	6.5J	6.00J-7.00J	M+S	775	1709	340	50	72	2	E	E	2013.06
215/65R16		98Q	AW03	6.5J	6.00J-7.00J	M+S	750	1653	300	44	-	-	-	-	2013.08
215/65R16		98H	AW03	6.5J	6.00J-7.00J	M+S	750	1653	300	44	72	2	E	E	
225/55R16		95H	AW03	7J	6.50J-7.50J	M+S	690	1521	300	44	72	2	E	E	
225/55R16	XL	99Q	AW03	7J	6.50J-7.50J	M+S	775	1709	340	50	-	-	-	-	2013.08
225/55R16	XL	99H	AW03	7J	6.50J-7.50J	M+S	775	1709	340	50	72	2	E	E	2013.06
205/50R17	XL	93V	AW03	6.5J	6.00J-7.00J	M+S	650	1433	340	50	72	2	E	E	2013.06
215/45R17	XL	91V	AW03	7J	6.50J-7.50J	M+S	615	1356	340	50	72	2	E	E	2013.06
215/50R17	XL	95V	AW03	7J	6.50J-7.50J	M+S	690	1521	340	50	72	2	E	E	2013.06
215/55R17	XL	98Q	AW03	7J	6.50J-7.50J	M+S	750	1653	340	50	-	-	-	-	2013.08
215/55R17	XL	98V	AW03	7J	6.50J-7.50J	M+S	750	1653	340	50	72	2	E	E	2013.06
225/45R17		91V	AW03	7.5J	7.00J-8.00J	M+S	615	1356	300	44	72	2	E	E	
225/45R17	XL	94V	AW03	7.5J	7.00J-8.00J	M+S	670	1477	340	50	72	2	E	E	2013.06
225/50R17	XL	98Q	AW03	7J	6.50J-7.50J	M+S	750	1653	340	50	-	-	-	-	2013.08
225/50R17	XL	98V	AW03	7J	6.50J-7.50J	M+S	750	1653	340	50	72	2	E	E	2013.06
225/55R17	XL	101Q	AW03	7J	6.50J-7.50J	M+S	825	1819	340	50	-	-	-	-	2013.08
225/55R17	XL	101V	AW03	7J	6.50J-7.50J	M+S	825	1819	340	50	72	2	E	E	2013.06
235/45R17		94Q	AW03	8J	7.50J-8.50J	M+S	670	1477	300	44	-	-	-	-	2013.08
225/40R18	XL	92V	AW03	8J	7.50J-8.50J	M+S	630	1389	340	50	72	2	E	E	2013.06



The Aeolus advanced silica-tread compound, was especially designed for central European winter weather, combined with a unique “three-dimensional Blade System with Lamella Technology” providing excellent traction and braking performance on cold, wet and snow covered roads



Directional tread V-profile with wide tread grooves allows excellent grip in winter conditions and on hard packed snow. The Aeolus SnowAce AW03 Central Profile Tread Design with Stable Blocks Elements in an “S-shape improves the grip on snow covered roads and thus provides shorter braking distances on snow.



Meets the severe snow service requirement of the Rubber Manufacturer's Association (RMA) and the standard of EU.

AEOLUS TYRES
Technology Meets Performance

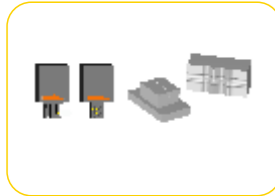


Test in Ivalo Finland

THE TYRE FOR EXCELLENT GRIP IN WINTER

The SnowAce AW02 was designed for maximum safety in all central Europe winter weather conditions. With its directional tread V profile provides grip, optimal and precise steering performance, excellent handling in dry and wet driving conditions and excellent snow traction.

SnowAce AW02
Comfort, WINTER



The silica-tread compound, specially designed for central European winter weather, combined with "3D Kerf-lamella technology" provides excellent traction and braking performance on cold and snow covered roads



Directional tread V-profile with wide tread grooves allows excellent grip in winter - like conditions in deep or hard packed snow covered roads.



Central profile design with special "saw blade elements" provides excellent handling and excellent braking performance especially in difficult winter weather conditions on wet and snowy roads.



Meets the severe snow service requirement of the Rubber Manufacturer's Association (RMA) and the standard of EU.



SIZE	/XL	LI&SS	Pattern	RIM		M+S	S/W Letter			EU Label Values				time to market
				Standard	Approved		MAX. LOAD (kg)	MAX. LOAD (LBS)	MAX. PRESSURE (kPa) PSI	Noise Value (dB)	Noise Grade	RR	WET	
155/70R13		75T	AW02	4.50B	4.00B-5.00B	M+S	387	853	300 44	71	2	F	C	2013.05
165/70R13		79T	AW02	5J	4.50J-5.50J	M+S	437	963	300 44	71	2	F	C	2013.05
175/70R13		82T	AW02	5J	4.50J-5.50J	M+S	475	1047	300 44	71	2	F	C	2013.05
155/65R14		75T	AW02	4.50B	4.00B-5.00B	M+S	387	853	300 44	71	2	F	C	2013.05
165/65R14		79T	AW02	5J	4.50J-5.50J	M+S	437	963	300 44	71	2	F	C	2013.05
165/70R14		81T	AW02	5J	4.50J-5.50J	M+S	462	1019	300 44	71	2	F	C	2013.05
175/65R14		82T	AW02	5J	4.50J-5.50J	M+S	475	1047	300 44	71	2	F	C	2013.05
175/65R14		82Q	AW02	5J	4.50J-5.50J	M+S	475	1047	300 44	-	-	-	-	2013.08
175/70R14		84T	AW02	5J	4.50J-5.50J	M+S	500	1102	300 44	71	2	F	C	2013.05
175/70R14		84Q	AW02	5J	4.50J-5.50J	M+S	500	1102	300 44	-	-	-	-	2013.08
185/60R14		82T	AW02	5.5J	5.00J-6.00J	M+S	475	1047	300 44	71	2	F	C	2013.05
185/65R14		86T	AW02	5.5J	5.00J-6.00J	M+S	530	1168	300 44	71	2	E	C	2013.05
185/65R14		86Q	AW02	5.5J	5.00J-6.00J	M+S	530	1168	300 44	-	-	-	-	2013.08
175/65R15		84T	AW02	5J	5.00J-6.00J	M+S	500	1102	300 44	71	2	F	C	2013.05
185/60R15		84T	AW02	5.5J	5.00J-6.00J	M+S	500	1102	300 44	71	2	F	C	2013.05
185/60R15		84Q	AW02	5.5J	5.00J-6.00J	M+S	500	1102	300 44	-	-	-	-	2013.08
185/60R15	XL	88T	AW02	5.5J	5.00J-6.00J	M+S	560	1235	340 50	71	2	E	E	2014
185/65R15		88Q	AW02	5.5J	5.00J-6.00J	M+S	560	1235	300 44	-	-	-	-	2013.08
185/65R15		88T	AW02	5.5J	5.00J-6.00J	M+S	560	1235	300 44	71	2	E	C	2013.05
195/55R15		85Q	AW02	6J	5.50J-6.50J	M+S	515	1135	300 44	-	-	-	-	2013.08
195/55R15		85H	AW02	6J	5.50J-6.50J	M+S	515	1135	300 44	72	2	F	C	2013.05
195/60R15		88T	AW02	6J	5.50J-6.50J	M+S	560	1235	300 44	72	2	E	C	2013.05
195/60R15		88Q	AW02	6J	5.50J-6.50J	M+S	560	1235	300 44	-	-	-	-	2013.08
195/65R15		91H	AW02	6J	5.50J-6.50J	M+S	615	1356	300 44	72	2	E	C	2013.05
195/65R15		91T	AW02	6J	5.50J-6.50J	M+S	615	1356	300 44	72	2	E	C	2013.06
195/65R15	XL	95T	AW02	6J	5.50J-6.50J	M+S	690	1521	340 50	72	2	E	E	2014
195/55R16		87H	AW02	6J	5.50J-6.50J	M+S	515	1135	300 44	72	2	F	C	2013.05

Aeolus SnowACE AW01 is a traction tyre for Nordic countries.



Multi-Thin Interlocking Sipes improve winter weather performance in wet and snow while the outer shoulder rib block provides exceptional braking and cornering.



Aeolus SnowAce AW01 was engineered with Silica compound combined with four circumferential grooves for lower rolling resistance, solid grip and responsive handling on wet and icy surfaces.



Meets the severe snow service requirement of the Rubber Manufacturer's Association (RMA) and the standard of EU.

SIZE	/XL	LI&SS	Pattern	RIM		M+S	S/W Letter				time to market
				Standard	Approved		MAX. LOAD (kg)	MAX. LOAD (LBS)	MAX. PRESSURE		
									(kPa)	PSI	
165/70R13		79T	AW01	5.00B	4.50B-5.50B	M+S	437	963	300	44	2012
185/60R14		82T	AW01	5.5J	5.00J-6.00J	M+S	475	1047	300	44	2012
195/60R14		86T	AW01	6J	5.50J-6.50J	M+S	530	1168	300	44	2012
195/65R15		91T	AW01	6J	5.5J-6.5J	M+S	615	1356	300	44	2012
205/55R16		91T	AW01	6.5J	6J-7J	M+S	615	1356	300	44	2012



SnowAce AW01
COMFORT, M+S, SEVERE SNOW SERVICE

Best choice for Extreme cold weather

---Aeolus studded winter tyre

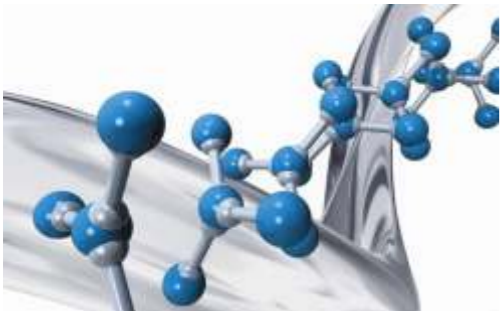
ICE CHALLENGER AW05

Why do we choose studded tyre?

Studded snow tyre take the regular snow tyre to a higher traction level by adding studs to the treads. The studs are made from metal or rubber and are designed to bite into the surface of snow and ice for a better grip.

In this way, people can have safest driving in winter.

It is a fundamental truth that studded tyres grip well on both snow and ice. Non-studded tyres are good on snow, but they are no match for studded tyres on ice.



The using of high quality SSBR&BR increase the winter performance. The addition of tearing resistant resin in tread compound increase life time in complex road condition, and increase the using life of studs at the same time.



An optimized longitudinal distribution of 22 lines' studs ensure the superior grip both on icy and snowy road to offer you a easy drive.

ICE CHALLENGER AW05





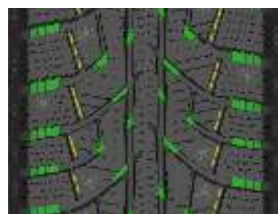
ICE CHALLENGER AW05

SIZE	/XL	LI&SS	Pattern	RIM		M+S	S/W Letter				time to market
				Standard	Approved		MAX. LOAD (kg)	MAX. LOAD (LBS)	MAX. PRESSURE		
									(kPa)	PSI	
175/70R13		82T	AW05	5B	4.5B-5.5B	M+S	475	1047	300	44	2014
175/65R14		82T	AW05	5J	4.50J-5.50J	M+S	475	1047	300	44	2014
175/65R14	XL	86T	AW05	5J	4.50J-5.50J	M+S	530	1168	340	50	2014
175/70R14		84T	AW05	5J	4.50J-5.50J	M+S	500	1102	300	44	2014
185/60R14		82T	AW05	5.5J	5.00J-6.00J	M+S	475	1047	300	44	2014
185/65R14	XL	90T	AW05	5.5J	5.00J-6.00J	M+S	600	1323	340	50	2014
185/65R14		86T	AW05	5.5J	5.00J-6.00J	M+S	530	1168	300	44	2014
185/70R14		88T	AW05	5.5J	5.00J-6.00J	M+S	560	1235	300	44	2014
185/60R15	XL	88T	AW05	5.5J	5.00J-6.00J	M+S	560	1235	340	50	2014
185/60R15		84T	AW05	5.5J	5.00J-6.00J	M+S	500	1102	300	44	2014
185/65R15		88T	AW05	5.5J	5.00J-6.00J	M+S	560	1235	300	44	2014
195/55R15		85T	AW05	6J	5.50J-6.50J	M+S	515	1135	300	44	2014
195/55R15	XL	89T	AW05	6J	5.50J-6.50J	M+S	580	1279	340	50	2014
195/60R15		88T	AW05	6J	5.50J-6.50J	M+S	560	1235	300	44	2014
195/65R15	XL	95T	AW05	6J	5.50J-6.50J	M+S	690	1521	340	50	2014
195/65R15		91T	AW05	6J	5.50J-6.50J	M+S	615	1356	300	44	2014
205/65R15		94T	AW05	6J	5.50J-6.50J	M+S	670	1477	300	44	2014
205/70R15		96T	AW05	6J	5.50J-6.50J	M+S	710	1565	300	44	2014
215/70R15		98T	AW05	6.5J	6.00J-7.00J	M+S	750	1653	300	44	2014
205/55R16	XL	94T	AW05	6.5J	6.00J-7.00J	M+S	670	1477	340	50	2014
205/55R16		91T	AW05	6.5J	6.00J-7.00J	M+S	615	1356	300	44	2014
205/60R16		92T	AW05	6J	5.50J-6.50J	M+S	630	1389	300	44	2014
215/55R16	XL	97T	AW05	7J	6.50J-7.50J	M+S	730	1609	340	50	2014
215/60R16		95T	AW05	6.5J	6.00J-7.00J	M+S	690	1521	300	44	2014
215/65R16		98T	AW05	6.5J	6.00J-7.00J	M+S	750	1653	300	44	2014
225/60R16	XL	102T	AW05	6.5J	6.00J-7.00J	M+S	850	1874	340	50	2014
225/60R16		98T	AW05	6.5J	6.00J-7.00J	M+S	750	1653	300	44	2014
225/65R16		100T	AW05	6.5J	6.00J-7.00J	M+S	800	1764	300	44	2014
215/55R17		94T	AW05	7J	6.50J-7.50J	M+S	670	1477	300	44	2014
215/60R17		96T	AW05	6.5J	6.00J-7.00J	M+S	690	1521	300	44	2014
215/65R17		99T	AW05	6.5J	6.00J-7.00J	M+S	775	1709	300	44	2014
225/45R17		91T	AW05	7.5J	7.00J-8.00J	M+S	615	1356	300	44	2014
225/45R17	XL	94H	AW05	7.5J	7.00J-8.00J	M+S	670	1477	340	50	2014
225/50R17		94T	AW05	7J	6.50J-7.50J	M+S	670	1477	300	44	2014
225/60R17		99T	AW05	6.5J	6.00J-7.00J	M+S	775	1709	300	44	2014

The dense sipes in the tread block helps to remove the water film on ice surface, guarantee shorter braking distance on ice. The zig-zag shaped central rib improve the traction and braking performance.



Longitudinal groove combine with lateral groove evacuate water easily and guarantee stable handling.



Extra deep skid depth and long broad lateral groove provide bigger longitudinal and lateral grip, provide better water drainage and grip in soft snow surface simultaneously.



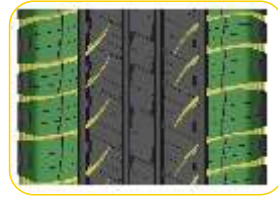
AEOLUS TYRE / SUV/LTR

SUV-----H/T
CrossAce AS02
A/T CrossAce AS01

AEOLUS TYRE SUV/LTR



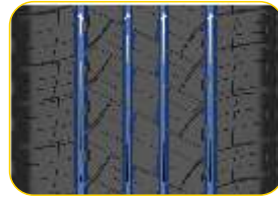
The perfect tyre for comfortable and relaxed driving. It is suitable for driving in road traffic and for light off-road use. In addition, the tyre tread pattern ensures optimum stability and outstanding grip as well as excellent water absorption. It is especially suitable for small and medium-sized SUV, CUV, large vans and light truck applications.



Symmetrical Tread Design improves high-speed cornering stability and provides increased dry and wet traction. CrossACE can be cross rotated to maximize long and even tread wear.



High Density Zig-Zag Siping provides improved wet traction to make you feel safer.



Four Circumferential Grooves maximize wet traction by improving water evacuation to minimize hydroplaning on wet roads.



CrossAce AS02

HIGHWAY TERRAIN, WET HANDLING, M+S, LONG MILEAGE



OUR MISSION IS TO CREATE ACCESS TO SIMPLY GOOD TYRES FOR THE MANY

CrossAce AS02

HIGHWAY TERRAIN, WET HANDLING, M+S, LONG MILEAGE

SIZE	/XL	LI&SS	Pattern	RIM		M+S	UTQG			S/W Letter		EU Label Values					time to market	
				Standard	Approved		TREAD WEAR	TRACTION	TEMPERATURE	MAX. LOAD (kg)	MAX. LOAD (LBS)	MAX. PRESSURE		Noise Value (dB)	Noise Grade	RR		WET
												(kPa)	PSI					
205/70R15		96H	AS02	6J	5.50J-6.50J	-	500	A	A	710	1565	300	44	71	2	E	B	2012
215/75R15		100S	AS02	6J	5.50J-6.50J	M+S	500	A	A	800	1764	300	44	-	-	-	-	2013.07
235/75R15		105T	AS02	6.5J	6.00J-7.00J	-	500	A	A	925	2039	300	44	71	2	E	B	2012
P225/75R15		102S	AS02	6J	5.50J-6.50J	M+S	500	A	A	850	1874	300	44	-	-	-	-	2013.03
P235/75R15		105T	AS02	6.5J	6.00J-7.00J	M+S	500	A	A	925	2039	300	44	-	-	-	-	2013.03
P235/75R15	XL	109S	AS02	6.5J	6.00J-7.00J	M+S	500	A	A	1030	2271	340	50	-	-	-	-	2013.03
215/65R16		98H	AS02	6.5J	6.00J-7.00J	-	500	A	A	750	1653	300	44	71	2	E	B	2012
225/70R16		103T	AS02	6.5J	6.00J-7.00J	-	500	A	A	875	1929	300	44	-	-	-	-	2012
235/60R16		100H	AS02	7J	6.50J-7.50J	-	500	A	A	800	1764	300	44	71	2	E	B	2012
LT225/75R16		115/112S	AS02	6J	5.50J-6.50J	M+S	500	A	A	1215/1120	2678/2469	550	80	-	-	-	-	2013.04
LT235/85R16		120/116S	AS02	6.5J	6.00J-7.00J	M+S	500	A	A	1400/1250	3086/2756	550	80	-	-	-	-	2013.04
LT245/75R16		120/116S	AS02	7J	6.50J-7.50J	M+S	500	A	A	1400/1250	3086/2756	550	80	-	-	-	-	2013.04
LT265/75R16		123/120S	AS02	7.5J	7.00J-8.00J	M+S	500	A	A	1550/1400	3417/3086	550	80	-	-	-	-	2013.02
LT285/75R16		126/123R	AS02	8J	7.50J-8.50J	M+S	500	A	A	1700/1550	3747/3417	550	80	-	-	-	-	2013.04
P215/70R16		100S	AS02	6.5J	6.00J-7.00J	M+S	500	A	A	800	1764	300	44	-	-	-	-	2013.03
P215/70R16		100H	AS02	6.5J	6.00J-7.00J	-	500	A	A	800	1764	300	44	71	2	E	B	2014.03
P225/70R16		103S	AS02	6.5J	6.00J-7.00J	M+S	500	A	A	875	1929	300	44	-	-	-	-	2013.01
P225/70R16		103H	AS02	6.5J	6.00J-7.00J	-	500	A	A	875	1929	300	44	71	2	E	B	2014.03
P235/70R16		106S	AS02	7J	6.50J-7.50J	M+S	500	A	A	950	2094	300	44	-	-	-	-	2013.03
P235/70R16		106H	AS02	7J	6.50J-7.50J	-	500	A	A	950	2094	300	44	71	2	E	B	2014.03
P245/70R16		107S	AS02	7J	6.50J-7.50J	M+S	500	A	A	975	2149	300	44	-	-	-	-	2012
P245/70R16		107H	AS02	7J	6.50J-7.50J	-	500	A	A	975	2149	300	44	Test	test	E	B	2014.03
P255/70R16		111S	AS02	7.5J	7.00J-8.00J	M+S	500	A	A	1090	2403	300	44	-	-	-	-	2013.01
P265/70R16		112S	AS02	8J	7.50J-8.50J	M+S	500	A	A	1120	2469	300	44	-	-	-	-	2013.04
225/60R17		99H	AS02	6.5J	6.00J-7.00J	-	500	A	A	775	1709	300	44	71	2	E	B	2012
235/55R17		99H	AS02	7.5	7.00J-8.00J	-	500	A	A	775	1709	300	44	71	2	E	B	2013.10
235/55R17		99V	AS02	7.5J	7.00J-8.00J	-	500	A	A	775	1709	300	44	71	2	E	B	2012
235/65R17	XL	108V	AS02	7J	6.50J-7.50J	-	500	A	A	1000	2205	340	50	72	2	C	B	2013.01
LT225/75R17		116/113Q	AS02	6J	6.00J-7.50J	M+S	500	A	A	1250/1150	2756/2535	550	80	-	-	-	-	2013.02
LT245/75R17		121/118S	AS02	7J	6.50J-7.50J	M+S	500	A	A	1450/1320	3197/2910	550	80	-	-	-	-	2013.02
LT265/70R17		121/118S	AS02	8J	7.50J-8.50J	M+S	500	A	A	1450/1320	3197/2910	550	80	-	-	-	-	2013.02
LT285/70R17		121/118S	AS02	8.5J	8.00J-9.00J	M+S	500	A	A	1450/1320	3197/2910	450	65	-	-	-	-	2013.03
P225/65R17		102H	AS02	6.5J	6.00J-7.00J	M+S	500	A	A	850	1874	300	44	-	-	-	-	2013.01
P245/65R17		107S	AS02	7J	6.50J-7.50J	M+S	500	A	A	975	2149	300	44	-	-	-	-	2013.03
P245/70R17		110S	AS02	7J	6.50J-7.50J	M+S	500	A	A	1060	2337	300	44	-	-	-	-	2013.04
P265/65R17		112S	AS02	8J	7.50J-8.50J	M+S	500	A	A	1120	2469	300	44	-	-	-	-	2013.04
P265/70R17		115S	AS02	8J	7.50J-8.50J	M+S	500	A	A	1215	2679	300	44	-	-	-	-	2012
225/60R18		100H	AS02	6.5J	6.00J-7.00J	M+S	500	A	A	775	1709	300	44	-	-	-	-	2012
LT275/65R18		123/120S	AS02	8J	7.00J-9.00J	M+S	500	A	A	1550/1400	3417/3086	550	80	-	-	-	-	2012
LT275/70R18		125/122S	AS02	8J	7.00J-8.50J	M+S	500	A	A	1650/1500	3638/3307	550	80	-	-	-	-	2012
235/55R18		100H	AS02	7.5J	7.00J-8.00J	M+S	500	A	A	800	1764	300	44	-	-	-	-	2014
LT275/65R20		126/123S	AS02	8J	7.00J-9.50J	M+S	-	-	-	1700/1550	3748/3417	550	80	-	-	-	-	2013.03
31x10.50R15LT		109S	AS02	8.5J	8.00J-9.00J	M+S	500	A	A	1030	2271	350	51	-	-	-	-	2013.03





ALL TERRAIN LIGHT TRUCK TYRE

The AEOLUS CrossAce AS01 is a versatile all-terrain light truck tyre engineered to deliver high mileage for on/off road driving conditions. Promotes even wear and reduces cutting and chipping without sacrificing wet and dry traction- excellent for attacking a range of snow conditions



CrossAce AS01

HANDLING, M+S, LONG MILEAGE, A/T

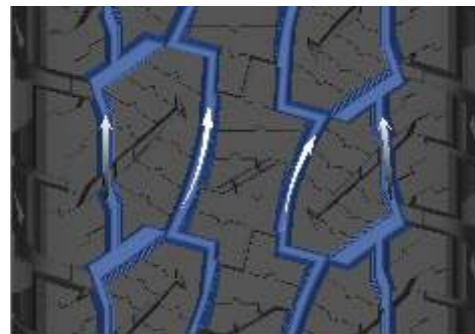
CrossAce AS01

HANDLING, M+S, LONG MILEAGE,A/T

**Strong and durable tyre,
witnessed by
tough China Grand Rally!**



CrossAce AS01
HANDLING, M+S, LONG MILEAGE,A/T



Aggressive tread design enhances light truck traction in wet, mud and snow conditions.
Stable tread block design provides greater traction for improved cornering and braking
Deepen groove design provides long mileage and superior traction on all road conditions

SIZE	/XL	LI&SS	Pattern	RIM		M+S	UTQG			S/W Letter				time to market
				Standard	Approved		TREAD WERAR	TRACTI ON	TEMPER ATURE	MAX. LOAD (kg)	MAX. LOAD (LBS)	MAX. PRESSURE		
												(kPa)	PSI	
215/75R15		100T	AS01	6J	5.50J-6.50J	M+S	500	A	B	800	1764	300	44	2013.10
LT215/75R15		100/97S	AS01	6J	5.50J-6.50J	M+S	-	-	-	800/730	1765/1610	350	50	
LT235/75R15		104/101S	AS01	6.5J	6.00J-7.00J	M+S	-	-	-	900/825	1985/1820	350	50	
P205/70R15		96T	AS01	6J	5.50J-6.50J	M+S	500	A	B	710	1565	300	44	
P225/70R15		100T	AS01	6.5J	6.00J-7.00J	M+S	500	A	B	800	1764	300	44	
P235/75R15		105S	AS01	6.5J	6.00J-7.00J	M+S	500	A	B	925	2039	300	44	
P265/70R15		112T	AS01	8J	7.50J-8.50J	M+S	500	A	B	1120	2469	300	44	
235/70R16		106T	AS01	6.5J	6.00J-7.00J	M+S	500	A	B	925	2039	300	44	
245/70R16		107T	AS01	7J	6.50J-7.50J	M+S	500	A	B	975	2149	300	44	
LT225/75R16		115/112S	AS01	6J	5.50J-6.50J	M+S	500	A	B	1215/1120	2678/2469	550	80	2013.02
LT235/85R16		120/116S	AS01	6.5J	6.00J-7.00J	M+S	500	A	B	1400/1250	3086/2756	550	80	2013.02
LT245/75R16		120/116Q	AS01	7J	6.50J-7.50J	M+S	500	A	B	1400/1250	3086/1250	550	80	2013.02
LT265/70R16		117/114T	AS01	8J	7.50J-8.50J	M+S	-	-	-	1285/1180	2835/2600	450	65	
LT265/75R16		123/120Q	AS01	7.5J	7.00J-8.00J	M+S	500	A	B	1550/1400	3417/3086	550	80	
LT265/75R16		123/120Q	AS01	7.5J	7.00J-8.00J	M+S	500	A	B	1550/1400	3417/3086	550	80	2013.02
LT285/75R16		126/123R	AS01	8J	7.50J-8.50J	M+S	500	A	B	1700/1550	3747/3417	550	80	2013.04
P215/65R16		98H	AS01	6.5J	6.00J-7.00J	M+S	500	A	B	750	1653	300	44	
P215/70R16		100T	AS01	6.5J	6.00J-7.00J	M+S	500	A	B	800	1764	300	44	
P225/70R16		103T	AS01	6.5J	6.00J-7.00J	M+S	500	A	B	875	1929	300	44	
P245/70R16		107T	AS01	7J	6.50J-7.50J	M+S	500	A	B	975	2149	300	44	2013.04
P255/70R16		111T	AS01	7.5J	7.00J-8.00J	M+S	500	A	B	1090	2403	300	44	2013.04
P265/70R16		112T	AS01	8J	7.50J-8.50J	M+S	500	A	B	1090	2403	300	44	2013.04
P275/70R16		114T	AS01	8J	7.50J-8.50J	M+S	500	A	B	1180	2601	300	44	
LT245/75R17		121/118R	AS01	7J	6.50J-7.50J	M+S	500	A	B	1450/1320	3197/2910	550	80	2013.02
LT265/70R17		121/118S	AS01	8J	7.50J-8.50J	M+S	500	A	B	1450/1320	3197/2910	550	80	2013.02
LT285/70R17		121/118R	AS01	8.5J	8.00J-9.00J	M+S	500	A	B	1450/1320	3197/2910	450	65	2013.04
P225/65R17		102H	AS01	6.5J	6.00J-7.00J	M+S	500	A	B	850	1874	300	44	
P245/65R17		107T	AS01	7J	6.50J-7.50J	M+S	500	A	B	975	2149	300	44	2013.04
P245/70R17		110T	AS01	7J	6.50J-7.50J	M+S	500	A	B	1060	2337	300	44	2013.04
P265/65R17		112T	AS01	8J	7.50J-8.50J	M+S	500	A	B	1120	2469	300	44	2013.04
P265/70R17		115T	AS01	8J	7.50J-8.50J	M+S	500	A	B	1215	2679	300	44	2013.04
30X9.50R15LT		104S	AS01	7J	6.50J-7.50J	M+S	-	-	-	900	1984	375	55	
31x10.50R15LT		109S	AS01	8.5J	8.00J-9.00J	M+S	500	A	B	1030	2271	350	51	2013.04



AEOLUS TYRE / VAN



TransAce AL01

Summer Tyre

AEOLUS TYRE VAN

THE TRANSPORTER TYRE

TransACE AL01 is the ideal tyre for distribution transport. It was specially designed for demanding commercial usage: durable, robust and reliable even summer conditions. The TransACE was especially designed for the special requirements of light commercial vehicles.



Two continuous midribs provide optimal cornering performance even with higher loads and long mileage
 The stable profile and optimized contact surfaces offer driving stability and good steering response time as well as uniform wear of the tread

SIZE	/XL	LI&SS	Pattern	RIM		M+S	S/W Letter				EU Label Values				time to market
				Standard	Approved		MAX. LOAD (kg)	MAX. LOAD (LBS)	MAX. PRESSURE		Noise Value (dB)	Noise Grade	RR	WET	
									(kPa)	PSI					
165/70R13C		88/86S	AL01	5.00B	4.50B-5.50B	M+S	560/530	1235/1168	375	55	-	-	-	-	2012
185R14C		102/100R	AL01	5.5J	5.00J-6.00J	-	850/800	1874/1764	450	65	72	2	E	B	2012
195R14C		106/104R	AL01	5.5J	5.00J-6.00J	-	950/900	2094/1984	450	65	72	2	E	B	2013.07
175/70R14LT		95/93S	AL01	5.00B	4.50B-5.50B	M+S	690/650	1521/1433	375	55	-	-	-	-	2013.02
195/65R15C		98/96R	AL01	6J	5.50J-6.50J	-	750/710	1653/1565	375	55	72	2	E	B	2012
195/70R15C		104/102R	AL01	6J	5.50J-6.50J	-	900/850	1984/1874	450	65	72	2	E	B	2012
195/70R15C		99/96R	AL01	6J	5.50J-6.50J	M+S	775/710	1708/1565	450	65	-	-	-	-	2012
195/70R15C		104/101R	AL01	6J	5.50J-6.50J	M+S	900/825	1984/1819	550	80	72	2	E	B	2013.04
195R15C		106/104S	AL01	5.5J	5.00J-6.00J	-	950/900	2094/1984							
205/65R15C		102/100T	AL01	6J	5.50J-6.50J	-	850/800	1874/1764	375	54					
215/70R15C		109/107S	AL01	6.5J	6.00J-7.00J	-	1030/975	2271/2149	450	65	72	2	E	B	2013.07
225/70R15C		112/110R	AL01	6.5J	6.00J-7.00J	-	1120/1060	2469/2337	450	65	72	2	E	B	2013.08
185/75R16C		104/102R	AL01	5J	4.50J-5.50J	-	900/850	1984/1874							
195/65R16C		104/102T	AL01	6J	5.50J-6.50J	-	900/850	1984/1874	475	69					
195/75R16C		107/105R	AL01	5.5J	5.00J-6.00J	-	975/925	2149/2039	475	69	72	2	E	B	2013.07
205/65R16C		107/105T	AL01	6J	5.50J-6.50J	-	975/925	2149/2039	475	69	72	2	E	B	2013.07
205/75R16C		113/111R	AL01	5.5J	5.00J-6.00J	-	1150/1090	2535/2403	525	76	72	2	E	B	2013.08
215/60R16C		108/106T	AL01	6.5J	6.00J-7.00J	-	1000/950	2205/2094	475	69					
215/65R16C		109/107T	AL01	6.5J	6.00J-7.00J	-	1030/975	2271/2149	475	69	72	2	E	B	2013.07
215/70R16C		108/106T	AL01	6.5J	6.00J-7.00J	-	1000/950	2205/2094	375	55					
215/75R16C		116/114R	AL01	6J	5.50J-6.50J	-	1250/1180	2756/2601	525	76	72	2	E	B	2013.07
225/65R16C		112/110T	AL01	6.5J	6.00J-7.00J	-	1120/1060	2469/2337	475	69	72	2	E	B	2013.07
225/75R16C		121/120R	AL01	6J	5.50J-6.50J	-	1450/1400	3197/3086	575	83	72	2	E	B	2013.08
235/65R16C		115/113R	AL01	7J	6.50J-7.50J	-	1215/1150	2679/2535	450	65	72	2	E	B	2012



TransAce AL01
 COMFORT, WET HANDLING, FUEL EFFICIENCY,
 SUMMER, LONG MILEAGE

8 ADVANTAGES

AEOLUS tyres are manufactured under stringent environmental regulations.

AEOLUS Sustainability is always at the forefront of all AEOLUS product manufacturing.

AEOLUS tyre production follows the latest scientific and technical developments.

AEOLUS guarantees an extremely favourable price / performance ratio.

AEOLUS products are tested to the highest quality standards.

AEOLUS tyres have a long life even with heavy loads.

AEOLUS tyres are exclusively produced in-house.

AEOLUS tyres follow the highest safety standards in materials and workmanship.

SAFETY GUIDELINES

Tyre pressure affects your driving safety and fuel economy so please check and adjust air pressure regularly.

Consequences of under -inflated tyres:

Shorter durability and danger of breakdowns

Higher fuel consumption

Irregular tyre wear

Consequences of over- inflated tyres:

Reduced handling characteristics

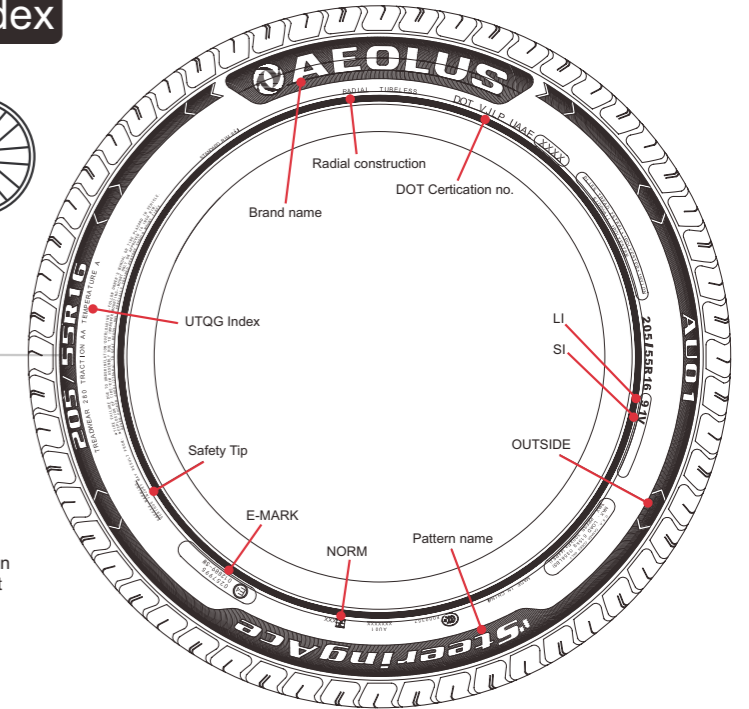
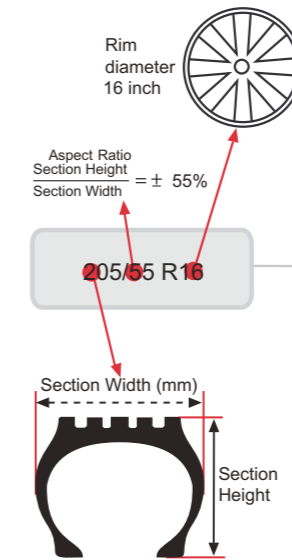
Less driving comfort

Rapid tread wear

Designations, Load and Speed Index

SPEED-INDEX

SPEED SYMBOL	MAXIMUM SPEED (KPH)	MAXIMUM SPEED (MPH)
L	120	75
M	130	80
N	140	85
P	150	95
Q	160	100
R	170	105
S	180	110
T	190	120
U	200	125
H	210	130
V	240	150
W	270	170
Y	300	190
Z	Above 240	Above 150



LOAD-INDEX

LI	KG	LI	KG	LI	KG	LI	KG
55	218	79	437	101	825	123	1550
58	218	80	450	102	850	124	1600
59	243	81	462	103	875	125	1650
60	250	82	485	104	900	126	1700
61	257	83	487	105	925	127	1750
62	265	84	500	106	950	128	1800
63	272	85	515	107	975	129	1850
64	280	86	530	108	1000	130	1900
65	290	87	545	109	1030	131	1950
66	300	88	560	110	1060	132	2000
67	307	89	580	111	1090	133	2060
68	315	90	600	112	1120	134	2120
69	325	91	615	113	1150	135	2180
70	335	92	630	114	1180	136	2240
71	345	93	650	115	1215	137	2300
72	355	94	670	116	1250	138	2360
73	365	95	690	117	1285	139	2430
74	375	96	710	118	1320	140	2500
75	387	97	730	119	1360		
76	400	98	750	120	1400		
77	412	99	775	121	1450		
78	425	100	800	122	1500		

The markings on the sides of tyres describe two things:

The size and specification of the tyre
The fact the tyre has been tested and approved to legal safety standards

205/55R16

205 = the width in mm of the tyre's cross section

55=the "aspect ratio" – the ratio of the tyre's section height: cross section width

R=radial-ply construction (the method by which most tyres are made)

16=the diameter in inches of the wheel that the tyre fits

Load index (LI)

The load index is a numerical code which shows the maximum load a tyre can bear.
91 LI = 615kg

Speed Index (SI)

The speed rating shows the maximum speed for a tyre at full load.
V SI = 240km/h

