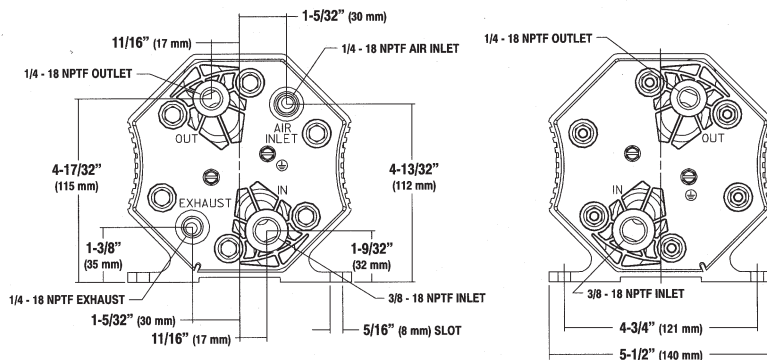


Performance Specifications

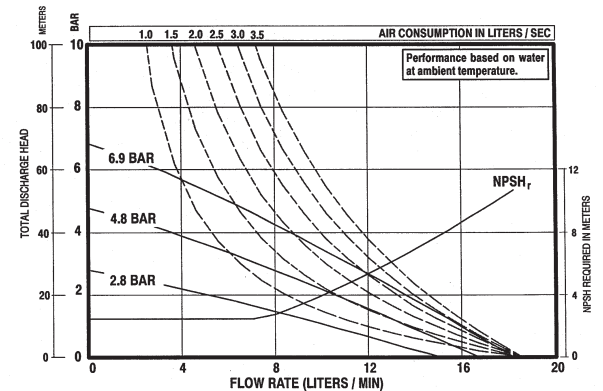
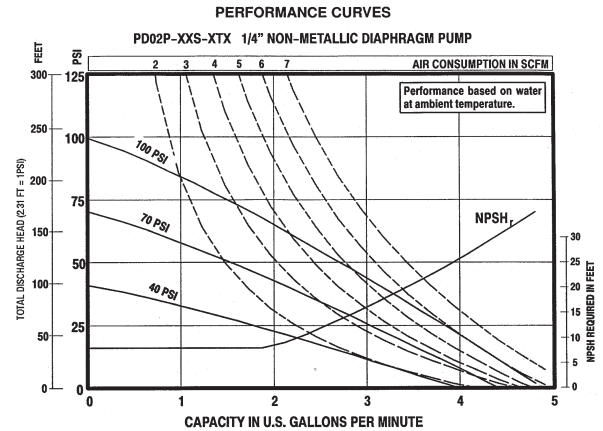
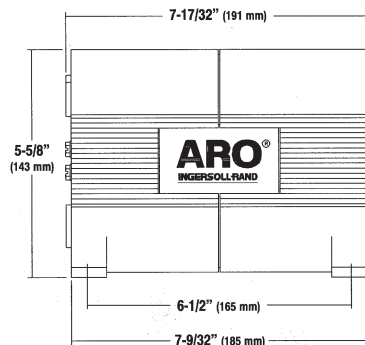
RATIO:	1:1
MAXIMUM G.P.M. (Liters):	4.6 (17.4)
DISPLACEMENT GALLONS (Liters) PER CYCLE:	.014 (.053)
AIR INLET:	1/4" (F)
FLUID INLET:	3/8" (F)
FLUID OUTLET:	1/4" (F)
MAX. OPERATING PRESSURE PSI (bar):	100 (6.8)
SUSPENDED SOLIDS MAX. DIA. IN. (mm):	Clean Fluid Only
WEIGHT - LBS. (KGS):	4.1 (1.85) Poly, 4.6 (2.10) Acetal, 4.9 (2.2) Kynar
MAX. DRY SUCTION LIFT:	20 ft.

Dimensional Data

END VIEWS



SIDE VIEW



Accessories

Recommended Filter/Regulator (See Page 36)

Filter / Regulator: P29122-600

For complete airline connection kit, see page 32, item "B".
Pulsation Dampener, see page 24.

For Diaphragm Pump Accessories see pages 32-34.

For recommended key models, refer to the ARO diaphragm pump price book (Form 2240-2). If the specific model you seek is not in the price book, consult the factory for further selection assistance.



P29122-600

Ordering

Best Selling Models | PD02P-APS-PTA, PD02P-APS-PTT, PD02P-ADS-DTT, PD02P-AKS-KTT

Base Model	Center Section	Port	Wet End	Hardware	Seat Material	Disk Check/ Diaphragm
P D O 2	P	X	X	X	X	X
1/4" Pump	Polypropylene		S Stain. Steel		TA Teflon/Santoprene TG Teflon/Nitrile TT Teflon/Teflon	
A NPT Single Inlet/Single Outlet D NPT Single Inlet/Dual Outlet E NPT Dual Inlet/Single Outlet H NPT Dual Inlet/Dual Outlet			D Acetal P Polypropylene K Kynar (PVDF)		D Acetal P Polypropylene K Kynar (PVDF)	

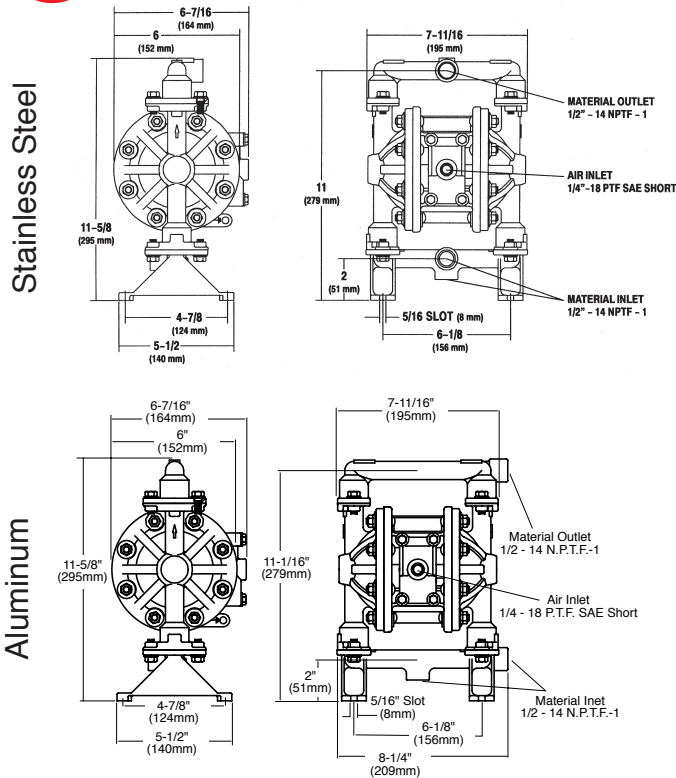
360°
mounting
versatility!

Get in the
ZONE
ARO

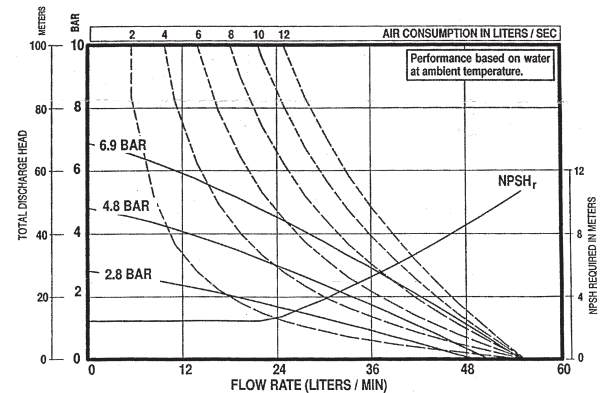
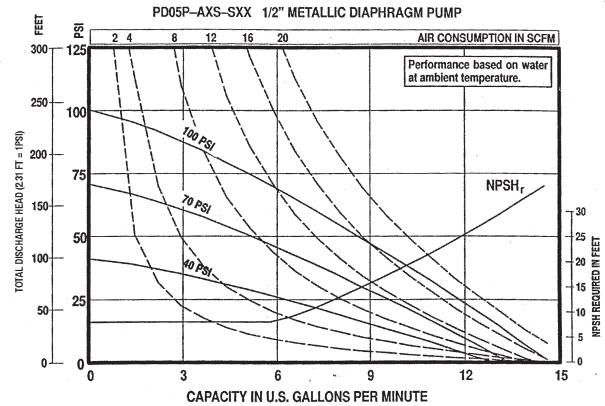
Performance Specifications

RATIO:	1:1
MAXIMUM G.P.M. (Liters):	13 (49)
DISPLACEMENT GALLONS (Liters) PER CYCLE:	.040 (.15)
AIR INLET:	1/4-inch NPT (F)
FLUID INLET:	1/2-inch NPT (F)
FLUID OUTLET:	1/2-inch NPT (F)
MAX. OPERATING PRESSURE PSI (bar):	100 psi (6.9 bar)
SUSPENDED SOLIDS MAX. DIA. IN. (mm):	3/32" (2.4mm)
WEIGHT - LBS. (Kg):	14.6 lbs (6.6 kgs) SST, 8.4 lbs (3.8 kgs) Alum
MAX DRY SUCTION LIFT:	10 ft. (Teflon fitted)

Dimensional Data



PERFORMANCE CURVES



Accessories

Recommended Filter/Regulator (See Page 36)

Filter / Regulator: P29122-600

For complete airline connection kit, see page 32, item "B".
Pulsation Dampener, see page 24.



P29122-600

For Diaphragm Pump
Accessories see pages 32-34.

For recommended key models, refer to the ARO diaphragm pump price book (Form 2240-2). If the specific model you seek is not in the price book, consult the factory for further selection assistance.

Ordering

Best Selling Models | PD05-ASS-SAA, PD05P-ASS-STT, PD05P-ASS-STT, PD05P-AAS-PGG

Base Model				Center Section	Port	Wet End	Hardware	Seat Material	Ball Check/ Diaphragm
P	D	O	5	P	A	X	S	X	X
1/2" Pump				Polypropylene	A NPT	S 316 St. Steel	S Stainless Steel	AA Santoprene/Santoprene	Santoprene/Santoprene
						A Aluminum		GG Nitrile/Nitrile	Nitrile/Nitrile
								TT Teflon/Teflon	Teflon/Teflon
								S 300 Series	300 Series
								P Polypropylene	Polypropylene

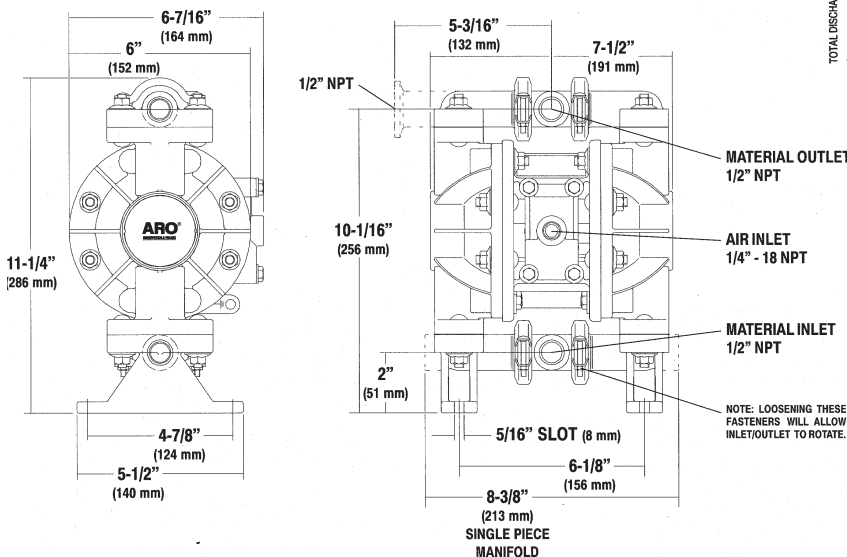
Perfect for
rugged
applications.



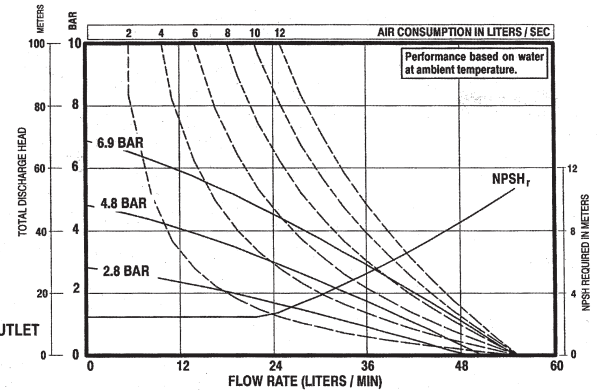
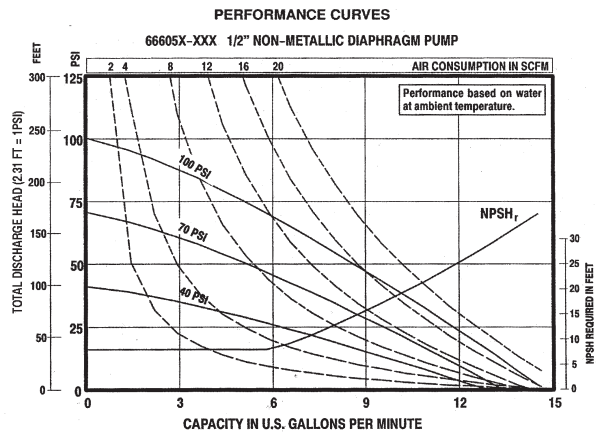
Performance Specifications

RATIO:	1:1
MAXIMUM G.P.M. (Liters):	13 (49) Ball 10 (37.9) Duckbill Check
DISPLACEMENT GALLONS (Liters) PER CYCLE:	.04 (.15) Ball .032 (.12) Duckbill Check
AIR INLET:	1/4-inch NPT(F)
FLUID INLET:	1/2-inch NPT(F)
FLUID OUTLET:	1/2-inch NPT(F)
MAX. OPERATING PRESSURE PSI (bar):	100 (6.9)
SUSPENDED SOLIDS MAX. DIA. IN. (mm):	3/32-inch (2.4) Duckbill Check- Fibers
WEIGHT - LBS. (Kg):	7.2 (3.3) Polypropylene 9.5 (4.3) Kynar(PVDF)
MAX. DRY SUCTION LIFT:	10 ft. (Teflon fitted)

Dimensional Data



Single-Piece Manifold Model
(Order models 66605J,H, or K)



Accessories

Recommended Filter/Regulator (See Page 36)

Filter / Regulator: P29122-600

For complete airline connection kit, see page 32, item "B".
Pulsation Dampener, see page 24.



P29122-600

For Diaphragm Pump
Accessories see pages 32-34.

For recommended key models, refer to the ARO diaphragm pump price book (Form 2240-2). If the specific model you seek is not in the price book, consult the factory for further selection assistance.

Ordering

Best Selling Models | 66605J-388, 66605J-3EB, 66605J-344, 66605K-444

Base Model	Air Motor	Wetted Parts	Check Valve Seats	Ball Check/ Diaphragm
6 6 6 0	5	X	X	X
1/2" Pump	Polypropylene	J* Polypropylene K* Kynar (PVDF) 3 Polypropylene 7 Kynar (PVDF)	2 Stainless Steel 3 Polypropylene 4 Kynar (PVDF) 6 Acetal 0 Duckbill	22 Nitrile/Nitrile 44 Teflon/Teflon 88 Polyurethane/Polyurethane EB Santoprene/Santoprene D2 Nitrile/Nitrile A4 Stainless/Teflon

World's
Best
Selling
Model

Get in the
ZONE

All hardware is 300 Series Stainless Steel.

* Single piece manifold

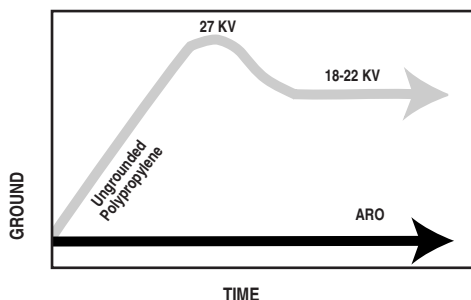
Performance Specifications

RATIO:	1:1
MAXIMUM G.P.M. (Liters):	13 (49)
DISPLACEMENT GALLONS (Liters) PER CYCLE:	.04 (.15)
AIR INLET:	1/4-inch NPT(F)
FLUID INLET:	1/2-inch NPT(F)
FLUID OUTLET:	1/2 inch NPT(F)
MAX. OPERATING PRESSURE PSI (bar):	100 (6.9)
SUSPENDED SOLIDS MAX. DIA. IN. (mm):	3/32-inch (2.3)
WEIGHT - LBS. (Kg):	8.8 (4.0) Acetal
MAX. DRY SUCTION LIFT:	10 ft. (Teflon fitted)

Dimensional Data

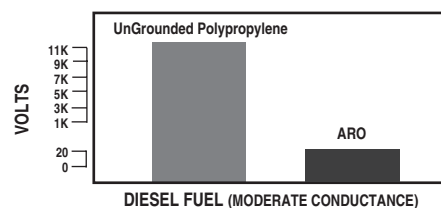
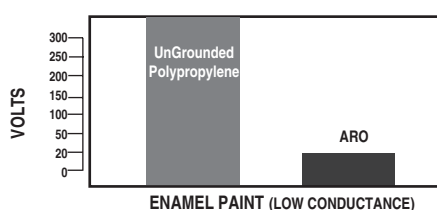
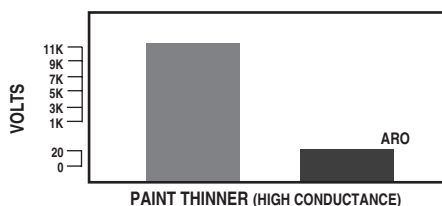
See 1/2-inch (ports) non-metallic pump dimensional and flow data on page 11.

Independent Laboratory Test Results



UNRESTRICTED FLOW TESTS

This test involved readings taken with an electro-static field strength meter during free-flow operation of the three pumps. Readings were taken at each pump's metallic clamps and fasteners, traditional electro-static "hot-spots."

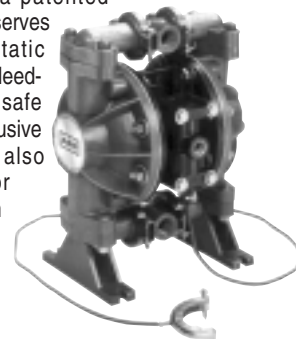


An independent lab test showed that the ARO Groundable pump, pumping materials such as paint thinner, diesel fuel and enamel paint under high flow conditions, accumulated a maximum of .0032 millijoules of energy. The report concluded that energies of this magnitude are not sufficient to ignite flammable vapors. Reported minimum ignition energies of several flammable fluids are as follows:

Methyl Ethyl Ketone: 0.53 millijoules	Acetone: 1.15 millijoules
Isopropyl Alcohol: 0.65 millijoules	Hydrogen: 0.02 millijoules

Model Overview

ARO® Groundable Diaphragm Pump is constructed from a patented material blend that serves to route electrostatic buildup to a single bleed-off point, ensuring safe operation. This exclusive body composition also provides superior compatibility with harsh industrial solvents and other volatile materials.



Accessories

Recommended Filter/Regulator (See Page 36)

Filter / Regulator: P29122-600

For complete airline connection kit, see page 32, item "B". Pulsation Dampener, see page 24.

For Diaphragm Pump Accessories see pages 32-34.

For recommended key models, refer to the ARO diaphragm pump price book (Form 2240-2). If the specific model you seek is not in the price book, consult the factory for further selection assistance.



P29122-600

Ordering

Best Selling Models | 66605H-2A4, 66605H-244

Base Model				Air Motor	Wetted Parts	Check Valve Seats			Ball Check/ Diaphragm		
6	6	6	0	5	X	X	X	X	X	X	X
1/2" Pump				Polypropylene		2 Stainless Steel			A4 Stainless S./Teflon		
						6 Acetal			44 Teflon/Teflon		
				H Single Piece Manifold/Acetal							
				6 3 Piece Manifold/Acetal							

Perfect for solvents, or solvent based paints, lacquers and coatings.

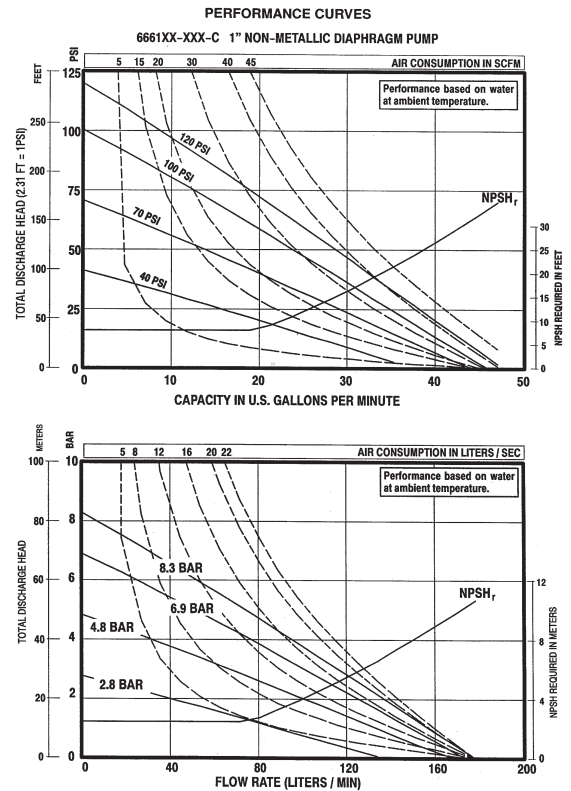
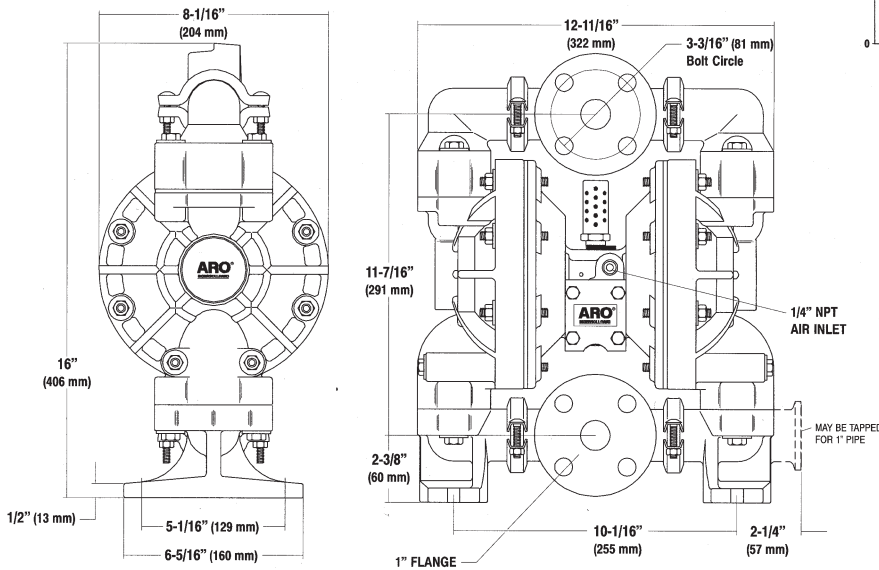
Get in the
ZONE
ARO

* A groundable pump is defined as one which is not able to accumulate a charge of sufficient energy to ignite flammable vapors. Be sure that every component in your system is properly grounded.

Performance Specifications

RATIO:	1:1
MAXIMUM G.P.M. (Liters):	47 (178)
DISPLACEMENT GALLONS (Liters) PER CYCLE:	.170 (.64)
AIR INLET:	1/4-inch NPT(F)
FLUID INLET:	ANSI Class 150, 1-inch Pipe Flange
FLUID OUTLET:	ANSI Class 150, 1-inch Pipe Flange
MAX. OPERATING PRESSURE PSI (bar):	120 (8.3)
SUSPENDED SOLIDS MAX. DIA. IN. (mm):	1/8-inch (3.2)
WEIGHT - LBS. (Kg):	20.2 (9.2) Polypropylene 28.5 (12.9) Kynar(PVDF) For Cast Iron center section models, add 8.5 lbs. (3.81 kg.)
MAX. DRY SUCTION LIFT:	15 ft. (Rubber fitted)

Dimensional Data



Accessories

Recommended Filter/Regulator (See Page 36)

Filter / Regulator: P29221-610

67078 - Polypropylene Flange Kit 1" NPT (F)

For complete airline connection kit, see page 32, item "B".
Pulsation Dampener, see page 24.

For Diaphragm Pump Accessories see pages 32-34.

For recommended key models, refer to the ARO diaphragm pump price book (Form 2240-2). If the specific model you seek is not in the price book, consult the factory for further selection assistance.



P29221-610

Ordering

Best Selling Models | 6661A3-3EB-C, 6661A3-344-C, 6661B3-344-C, 6661A4-444-C

Base Model	Air Motor	Wetted Parts	Check Valve Seats	Ball Check/ Diaphragm
6 6 6 1	X	X	X	X X X
1" Pump	A Aluminum B Cast Iron	3 Polypropylene 4 Kynar (PVDF)	3 Polypropylene 4 Kynar (PVDF) 8 Stainless Steel (400, hardened)	22 Nitrile/Nitrile 44 Teflon/Teflon EB Santoprene/Santoprene

All hardware is 300 Series Stainless Steel.

Perfect for aggressive chemicals

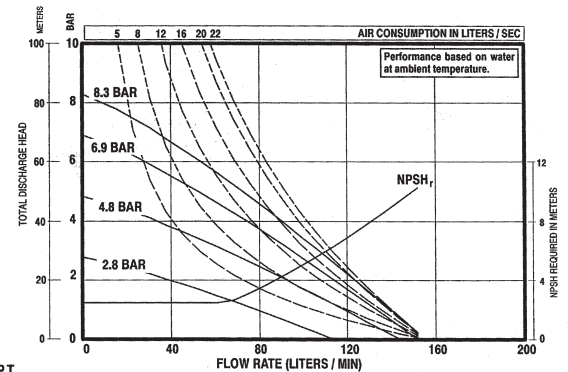
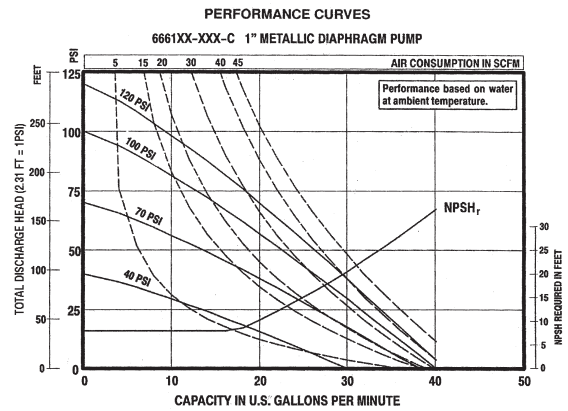
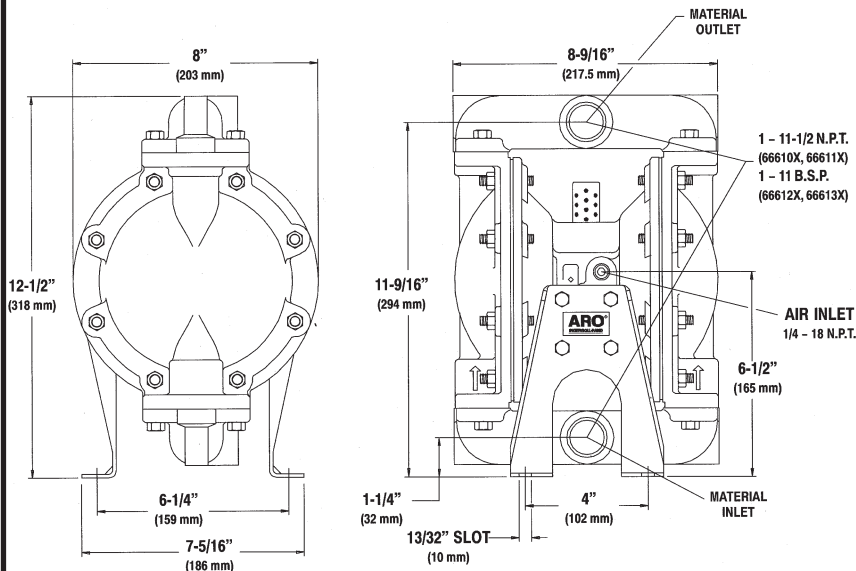
Get in the
ZONE
ARO

Performance Specifications

RATIO:	1:1
MAXIMUM G.P.M. (Liters):	35 (132)
DISPLACEMENT GALLONS (Liters) PER CYCLE:	.16 (.60)
AIR INLET:	1/4-inch NPT(F)
FLUID INLET:	1-inch NPT(F) or BSP(F)
FLUID OUTLET:	1-inch NPT(F) or BSP(F)
MAX. OPERATING PRESSURE PSI (bar):	120 (8.3)
SUSPENDED SOLIDS MAX. DIA. IN. (mm):	1/8-inch (3.2)
WEIGHT - LBS. (Kg):	19 (8.6) Aluminum 36 (16.3) Stainless Steel 31 (14.1) Cast Iron For Cast Iron center section models, add 8.5 lbs. (3.81 kg.)

MAX. DRY SUCTION LIFT: 20 ft. (Rubber fitted)

Dimensional Data



Accessories

Recommended Filter/Regulator
(See Page 36)

Filter / Regulator: P29221-610

For complete airline connection kit,
see page 32, item "B".
Pulsation Dampener, see page 24.

For Diaphragm Pump
Accessories see pages 32-34.

For recommended key models, refer to the ARO diaphragm pump price
book (Form 2240-2). If the specific model you seek is not in the price book,
consult the factory for further selection assistance.



P29221-610

Ordering

Best Selling Models | 666100-322-C, 666101-344-C, 666111-244-C, 666101-3EB-C, 666100-344-C, 666112-8EB-C

Base Model	Air Motor	Wetted Parts	Check Valve Seats	Ball Check/ Diaphragm	
6 6 6 1	X	X	X	X	C
1" Pump					
0 Aluminum 1 Cast Iron 2 BSP Aluminum 3 BSP Cast Iron	0 Aluminum 1 316 Stainless Steel 2 Cast Iron A Alum w/SS Hardware B 316 SS w/SS Hardware C Cast Iron w/SS Hardware		2 316 Stainless Steel 3 Polypropylene 4 Kynar (PVDF) 8 400 SS (400, Hardened)	22 Nitrile/Nitrile 33 Viton/Viton 44 Teflon/Teflon EB Santoprene/Santoprene A4 Stainless/Teflon	

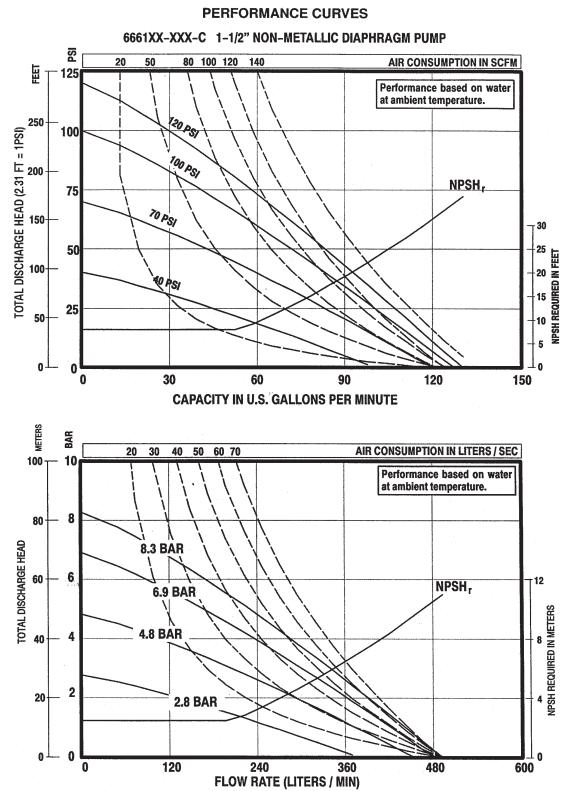
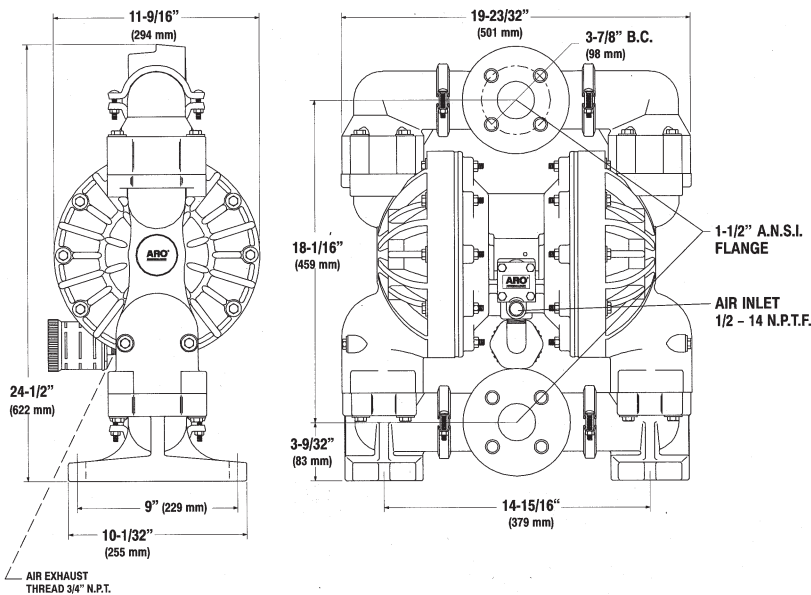
For abrasive applications, ARO's 1" cast iron pump is the model for you!



Performance Specifications

RATIO:	1:1
MAXIMUM G.P.M. (Liters):	100 (379)
DISPLACEMENT GALLONS (Liters) PER CYCLE:	.72 (2.7)
AIR INLET:	1/2-inch NPT (F)
FLUID INLET:	ANSI Class 150, 1-1/2-inch Pipe Flange
FLUID OUTLET:	ANSI Class 150, 1-1/2-inch Pipe Flange
MAX. OPERATING PRESSURE PSI (bar):	120 (8.3)
SUSPENDED SOLIDS MAX. DIA. IN. (mm):	1/4-inch (6.4)
WEIGHT - LBS. (Kg):	62 (28) Polypropylene 92 (42) Kynar(PVDF) For Cast Iron center section add 23 lbs. (10.4 kg)
MAX. DRY SUCTION LIFT:	14 ft. (Rubber fitted)

Dimensional Data



Accessories

Recommended Filter/Regulator (See Page 36)

Filter / Regulator: P29241-610
67079 - Polypropylene Flange Kit
1-1/2" NPT (F)

For complete airline connection kit, see page 32, item "B".
Pulsation Dampener, see page 25.

For Diaphragm Pump
Accessories see pages 32-34.

For recommended key models, refer to the ARO diaphragm pump price book (Form 2240-2). If the specific model you seek is not in the price book, consult the factory for further selection assistance.



P29241-610

Ordering

Best Selling Models | 6661T3-3EB-C, 6661U3-344-C, 6661T3-344-C, 6661U4-444-C

Base Model	Air Motor	Wetted Parts	Check Valve Seats	Ball Check/ Diaphragm	
6 6 6 1	X	X	X	X	- C
1-1/2" Pump	T Aluminum U Cast Iron	3 Polypropylene 4 Kynar (PVDF)	3 Polypropylene 4 Kynar (PVDF) 8 400 SS (400, Hardened)	22 Nitrile/Nitrile 44 Teflon/Teflon EB Santoprene/Santoprene	

All hardware is 300 Series Stainless Steel.

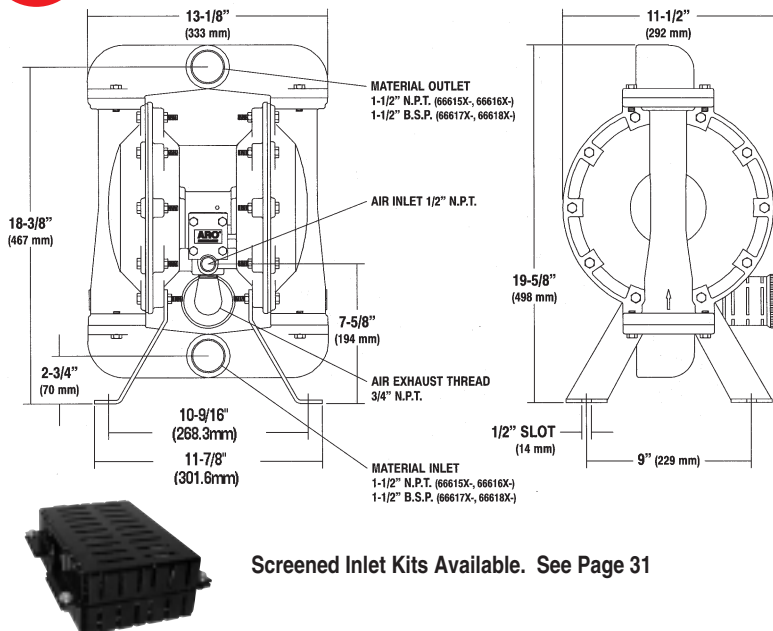
Perfect for
aggressive
chemicals

Get in the
ZONE
ARO

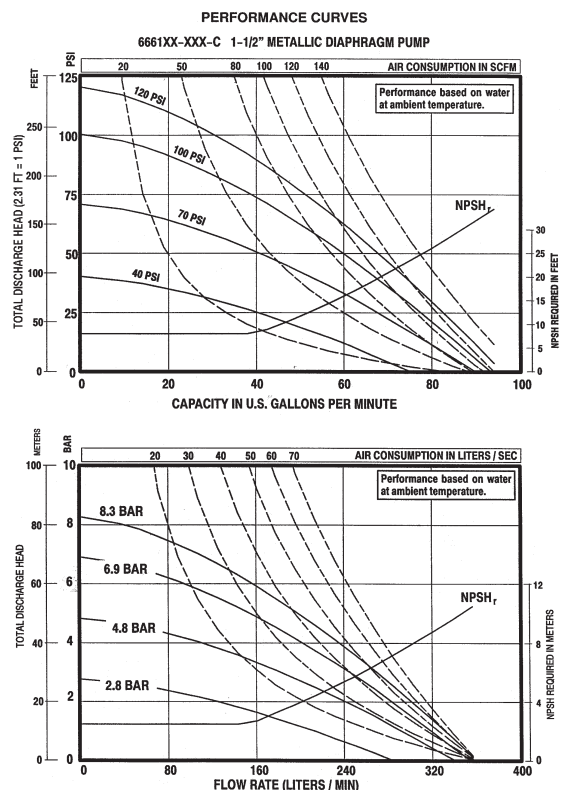
Performance Specifications

RATIO:	1:1
MAXIMUM G.P.M. (Liters):	100 (379)
DISPLACEMENT GALLONS (Liters) PER CYCLE:	.73 (2.76)
AIR INLET:	1/2-inch NPT(F)
FLUID INLET:	1-1/2-inch NPT(F) or BSP(F)
FLUID OUTLET:	1-1/2-inch NPT(F) or BSP(F)
MAX. OPERATING PRESSURE PSI (bar):	120 (8.3)
SUSPENDED SOLIDS MAX. DIA. IN. (mm):	1/4-inch (6.4)
WEIGHT - LBS. (Kg):	51 (23.1) Aluminum 84 (38.1) Stainless Steel 79 (35.8) Cast Iron For Cast Iron center section models, add 23 lbs. (10.4 kg.)
MAX. DRY SUCTION LIFT:	19 ft. (Rubber fitted)

Dimensional Data



Screened Inlet Kits Available. See Page 31



Accessories

Recommended Filter/Regulator (See Page 36)

Filter / Regulator: P29241-610

For complete airline connection kit, see page 32, item "B".
Pulsation Damper, see page 25.

For Diaphragm Pump Accessories see pages 32-34.



P29241-610

For recommended key models, refer to the ARO diaphragm pump price book (Form 2240-2). If the specific model you seek is not in the price book, consult the factory for further selection assistance.

Ordering

Best Selling Models | 666150-322-C, 666150-344-C, 666152-3EB-C, 666151-344-C, 666161-244-C

Base Model	Air Motor	Wetted Parts	Check Valve Seats	Ball Check/Diaphragm	
6 6 6 1	X X	-	X X X	-	C
1-1/2" Pump	5 Aluminum 6 Cast Iron 7 BSP Aluminum 8 BSP Cast Iron	0 Aluminum 1 316 Stainless Steel 2 Cast Iron A Alum w/SS Hardware B 316 SS w/SS Hardware C Cast Iron w/SS Hardware	2 316 Stainless Steel 3 Polypropylene 4 Kynar (PVDF) 8 400 SS (Hardened)	22 Nitrile/Nitrile 44 Teflon/Teflon EB Santoprene/Santoprene A4 Stainless/Teflon	

For viscous materials, stainless steel ball & checks available

